

2021/2022



Prevent Danger and Ensure Safety



Youtube



Facebook



LinkedIn



Twitter



Hebei Giant Metal Technology Co., Ltd

ADD: No.5 Weisan Road, High and New Tech Development Zone, Anging County.

Hengshui Office:

Tel: 0086-316-2052226

M.P.: 0086-19833186264 (Wechat, Whatsapp)

Web: www.fence-mesh.com

Email: sales@fence-mesh.com

Hebei Giant Metal Technology Co., Ltd



Company Introduction

Hebei Giant Metal Technology Co., Ltd (referred to as Giant Fence), Located in the hometown of the Wire Mesh of China—Anping County, Hebei Province, P.R. China.

Giant Fence was founded in 2014, we determined to make the Giant Fence to be a transnational innovation enterprise, by taking the idea of 'Good Product, Realized Price service' and to the whole shareholding system oriented.

Our main business is the research and develops, produce and sell Wire mesh fence, Intelligent fence, Gabion box, Chain link fence and other kinds of wire mesh products. Our products are mainly used in residential, villas, stadiums, highways, railways, prisons, airports, rivers and other fields. We has passed the quality management system ISO9001:2008, environmental management system ISO14001:2004, occupational health and safety management system GB/T28001:2011. We have exported more than 10 countries and regions, mainly the United States, Russia, Australia, Japan, and France.

Giant Fence adhere to the technical and management model innovation, to meet market competition and customer needs; adhere to the modern production equipment and complete quality control process to ensure that the product delivery and quality; adhere to the "won't send defective", won customers' trust and support.

Vision: Whole partner, get a sense of security from Giant Fence.

Core values: Innovation, sharing, gratitude and win-win situation.

Mission: Prevent danger and ensure safety.

Certification



Workshop



Panel welding



Bending workshop



FE coating



PVC coating



Welding workshop



Prod workshop



Packing



Loading



Factory gate



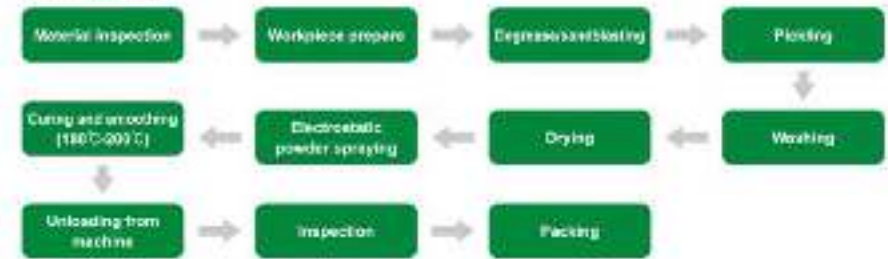
Celanon workshop

Processing Technic

Hot-Dipped Galvanization



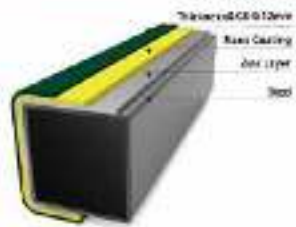
PVC Coating



Production Process



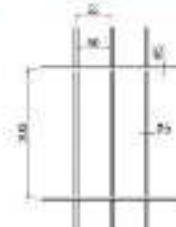
PE Coating



PVC Coating



PE Coating



Mesh Size

Giant Team



Security Fence



358 Fence With I Type Post



Specifications						
Line Width / Cross Wire	Post Size	Panel Length	Panel Height	Bending No.	Common Color	Surface Treatment
4.0 x 3.0mm		2.0m	1800mm	4		1. Hot-dipped galvanized after black zinc welded 2. PVC coated after galvanized wire welded 3. PE coated after galvanized wire welded
4.0 x 4.0mm		2.0m	2000mm	4	Green RAL 6005	
4.0 x 4.0mm	76.2 x 12.7mm	2.2m	2200mm	4	Grey RAL 7016	
4.5 x 3.0mm	75 x 12mm	2.0m	2400mm	4	Black RAL 9005	
4.5 x 4.5mm		1.8m	2600mm	6		
			3000mm	5		



GF019-1



GF019-2



GF019-3



GF019

358 Fence With Square Post



Specifications					
Post Size	Post Size	Panel Length	Panel Height	Post Length	Surface Treatment
I Type Post 	64 x 70mm 35 x 70mm	1.8m	1830mm	2400mm	1. Black zinc Hot-dipped galvanized 2. Galvanized tube PVC coated
		2.0m	2030mm	2600mm	
		2.5m	2230mm	2800mm	
Square Post 	3.0m	2430mm	3000mm		
	50 x 50mm 60 x 60mm 80 x 80mm 100 x 100mm	2800mm	3600mm	3600mm	



GF023-1



GF023-2



GF023-3



GF023

358 Fence With Flat Bar



• Specifications

Line Width x Cross Wire	Hook Size	Panel Length	Panel Height	Banding No.	Costrate Color	Surface Treatment
4.0 x 3.0mm		2.0m	1800mm	4		1. Hot-dipped galvanized after black wire welded 2. PVC coated after galvanized wire welded 3. PE coated after galvanized wire welded
4.0 x 4.0mm		2.0m	2000mm	4	Green RAL 6005	
4.0 x 4.0mm	76.2 x 12.7mm	2.2m	2200mm	4	Grey RAL 7016	
4.5 x 3.0mm	75 x 12mm	2.0m	2400mm	4	Black RAL 9005	
4.5 x 4.5mm		1.0m	3900mm	6		
			3000mm	5		



GF021-1



GF021-2



GF021-3



GF021

05 Prevent Danger and Ensure Safety

358 Fence With Buckle Plate



• Specifications

Post Size	Thickness	Panel Height	Panel Length	Flat Bar Thickness	Spike	Surface Treatment
		1800mm	2400mm	4.0mm		1. Black tube Hot-dipped galvanized 2. Galvanized tube PVC coated
60 x 60mm	1.6mm	2000mm	2500mm	4.5mm	Big type	
60 x 60mm	2.0mm	2200mm	2800mm	5.0mm	Medium type	
80 x 80mm	2.5mm	2400mm	3000mm	6.0mm	Small type	
100 x 100mm	3.0mm	2600mm	3500mm	7.0mm		
		3000mm	3700mm			



GF022-1



GF022-2



GF022-3



GF022

Prevent Danger and Ensure Safety

06

358 Fence With H Type Post



• Specifications

Horizontal Wire Dia.	Post Size	Panel Length	Panel Height	Common Color	Surface Treatment
4mm x 3mm			1800mm		
4mm x 4mm	76.2 x 42.7mm	2.0m	2000mm	Green RAL6005	1. Hot-dipped galvanized after black wire welded 2. PVC coated after galvanized wire welded 3. PE coated after galvanized wire welded
4.5mm x 4mm	75 x 42mm	2.2m	2200mm	Grey RAL7016	
		2.0m	2400mm	Black RAL9005	
4.5mm x 4.5mm			2600mm		
			3000mm		



GF023-1



GF023-2



GF023-3



GF023

07 Prevent Danger and Ensure Safety



358 Fence With H Type Post

• Specifications

Panel Height	Post Length	Post Size	Common Color	Surface Treatment
1800mm	2400mm			
2000mm	2600mm	100 x 65 x 6mm 150 x 150 x 5mm	Green RAL6005 Grey RAL7016 Black RAL9005	1. Black tube Hot-dipped galvanized 2. Galvanized tube PVC coated
2200mm	2800mm			
2400mm	3000mm			
2600mm	3200mm			
2800mm	3400mm			
3000mm	3700mm			



GF024-1



GF024-2



GF024-3



GF024

08 Prevent Danger and Ensure Safety



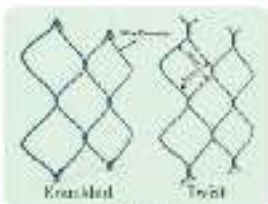
Chain Link Fence



Specifications

Wire Dia.	Material	Mesh Size	Post Height	Roll Length	Edge Woven
2.5mm	Electric galvanized wire	40 x 40mm	1.2m	5m	Knuckled edge Tared edge
3.0mm	Electric galvanized wire	50 x 50mm	1.5m	10m	
3.5mm	Hot-dipped galvanized wire	60 x 60mm	1.8m	15m	
4.0mm	Galvan wire	75 x 75mm	2.0m	20m	
4.5mm	Hot-DIP coated wire	100 x 100mm	2.4m	25m	
			3.0m	30m	

Surface Treatment: 1. Hot-dipped galvanized wire woven 2. PE/PVC coated wire woven 3. Stainless wire woven



GF005-1



GF005-2



GF005-3



GF005



Chain Link Fence



GF006



GF007



GF008



GF009



GF100





GF101

Chain Link Fence



Specifications

Post Style	Post Size	Rails	Thickness	Mesh Height	Post Length
Round Post 	Ø40	Ø32	1.5mm	1.2m	1.8m
	Ø48	Ø40	1.8mm	1.5m	2.0m
	Ø60	Ø48	2.0mm	1.8m	2.3m
	Ø75	Ø60	2.5mm	2.0m	2.5m
Angle Iron 	40 x 40mm	40 x 40mm 50 x 50mm	1.0mm	2.4m	3.0m
	50 x 50mm		1.5mm	2.8m	3.5m
	60 x 60mm		2.0mm	3.2m	4.0m
	75 x 75mm		2.5mm	3.6m	4.5m

Surface Treatment: 1. Pre-galvanized tube 2. Galvanized tube powder coated 3. Hot-dipped galvanized



GF102-1



GF102-2



GF102-3



GF102



Chain Link Fence



GF103



GF104



GF105



GF106



GF107



GF108



Prevent Damage and Ensure Safety

Prevent Danger and Ensure Safety



Welded Gabion Box



Specifications						
Mesh Wire Dia.	Spring Wire Dia.	Hole Size	Box Length	Diaphragm	Box Width	Box Height
3.0mm		30 x 50mm	1.0m	No		
3.5mm		30 x 100mm	1.5m	No		0.3m
4.0mm	4.0mm	50 x 100mm	2.0m	1	0.5m	0.5m
4.5mm	4.5mm	50 x 100mm	3.0m	2	1.0m	1.0m
5.0mm		75 x 75mm	4.0m	3	1.5m	1.5m
6.0mm		75 x 150mm	5.0m	4		
Surface Treatment:	1. PE coated after Galvanized wire welded; 2. Galvan wire welded; 3. Hot-dipped galvanized after black wire welded.					



GF121-1



GF121-2



GF121-3



GF121

13 Prevent Damage and Ensure Safety

Gabion Wall



Specifications							
Mesh Wire Dia.	Link Mode	Hole Size	Wall Length	Wall Width	Wall Height	HU Shape Post	Post Thickness
4.0mm	Spring	50 x 50mm	1.0m	0.1m	0.3m		3mm
4.5mm	C nail	50 x 100mm	1.5m	0.2m	1.0m	100 x 50mm	4mm
5.0mm	Metal clips	50 x 100mm	2.0m	0.2m	1.3m	120 x 74mm	5mm
		75 x 75mm	2.5m	0.3m	1.6m		6mm
		75 x 150mm			2.0m		
Surface Treatment:	1. PE coated after galvanized wire welded; 2. Galvan wire welded; 3. Hot-dipped galvanized after black wire welded.						



GF122-1



GF122-2



GF122-3



GF122

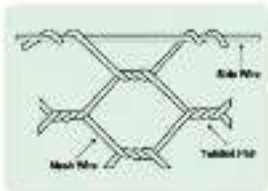
14 Prevent Danger and Ensure Safety

Woven Gabion



- Specifications								
Material	Mesh Wire	Salvage Wire	Tie Wire	Mesh Size	Length	Diaphragm	Width	Height
Galvanized wire	1.8mm	2.4mm	2.5mm	60 x 60mm	1.0m	1b	0.5m	0.2m
	2.1mm	2.7mm			2.0m	1	1.0m	
Galvan wire	2.2mm	3.0mm	2.5mm	80 x 100mm	3.0m	2	1.5m	0.5m
	2.4mm	3.2mm			4.0m	3	1.5m	1.0m
PE/PVC coated wire	2.7mm	3.4mm	2.5mm	100 x 120mm	5.0m	4	2.0m	1.5m
	3.0mm	4.0mm			6.0m	5	3.0m	

Extra Tie Wire: 2% Weight of galvanized



GF130-1



GF130-2



GF130-3



GF130



Woven Gabion



GF131



GF132



GF133



GF134



GF135



GF136

Blast Wall



Specifications		
Wire Diameter	Spring Wire	Mesh Size
4.0mm	4.0mm	76 x 76mm
4.5mm	4.5mm	80 x 100mm
5.0mm	4.5mm	100 x 100mm

Surface Treatment:
 1. Galvanized wire welded
 2. Carbon wire welded
 3. Hot-dipped galvanized after welded



GF123

Specifications			
Unit	Height	Width	Length
N/128 M/120	7' (2.13m)	2' (1.02m)	92' (28.94m)
N/118 M/110	3' 3" (1.0m)	2' 6" (0.76m)	30' (9.14m)
N/108 M/100	4' 6" (1.37m)	2' 0" (0.61m)	32' (10m)
M/98 N/90	7' 2" (2.21m)	7' (2.13m)	92' (27.74m)
M/88 N/80	5' 6" (1.68m)	2' 0" (0.61m)	10' (3.05m)
M/78 N/70	2' (0.61m)	2' 0" (0.61m)	10' (3.05m)
M/68 N/60	2' (0.61m)	5' (1.52m)	32' (10m)
M/58 N/50	3' 3" (1.0m)	3' 3" (1.0m)	32' (10m)
M/48 N/40	2' (0.61m)	2' 0" (0.61m)	4' (1.27m)
M/38 N/30	2' (0.61m)	2' 0" (0.61m)	10' (3.05m)
M/28 N/20	4' 6" (1.37m)	2' 6" (1.02m)	32' (10m)
M/18 N/10	7' (2.13m)	2' 6" (1.02m)	18' (5.5m)



GF121

17 Prevent Damage and Ensure Safety



Blast Wall



GF120



GF126



GF127



GF128



GF129

18 Prevent Damage and Ensure Safety

Tubular Fence



Steel Tubular Fence



Specifications

Panel Length	Panel Height	Post	Post Thickness	Posts No.	Flitch	Panel Distance	Post Size
1.5m	1200mm		1.0mm				
1.8m	1500mm	25 x 25mm	1.2mm	2pcs	18 x 18 x 1mm/1.2mm	100mm	60 x 60 x 1.5mm/1.8mm/2mm
2.0m	1800mm	45 x 40mm	1.0mm	3pcs	18 x 18 x 1.5mm/1.0mm	125mm	60 x 60 x 1.5mm/1.8mm/2mm
2.4m	2000mm	45 x 45mm	1.8mm	4pcs	Ø 16 x 1.2/1.5mm	140mm	75 x 75 x 1.5mm/1.8mm/2mm
2.8m	2100mm		2.0mm		Ø 18 x 1.2/1.5mm		
3.0m	2400mm		2.5mm				

Surface Treatment: Powder coated after Hot-dipped galvanized tube welded.



GF070-1



GF070-2



GF070-3



GF070



Prevent Danger and Ensure Safety



Steel Tubular Fence



GF071



GF072



GF073



GF074



GF075



GF076

Prevent Danger and Ensure Safety



Aluminum Tubular Fence



Specifications

Panel Length	Panel Height	Post	Post Thickness	Posts No.	Picket	Picket Distance	Post Size
1.5m	1200mm		1.0mm				
1.8m	1500mm	25 x 25mm	1.2mm	2pcs	18 x 18 x 1mm/1.2mm	100mm	60 x 60 x 1.5mm/1.8mm/2mm
2.0m	1800mm	25 x 38mm	1.0mm	3pcs	18 x 18 x 1.5mm/1.0mm	110mm	60 x 60 x 1.5mm/1.8mm/2mm
2.4m	2000mm	38 x 38mm	1.8mm	4pcs	Ø 16 x 1.2/1.5mm		
2.8m	2100mm	40 x 40mm	2.0mm		Ø 18 x 1.2/1.5mm	125mm	75 x 75 x 1.5mm/1.8mm/2mm
3.0m	2400mm	45 x 45mm	2.5mm				

Surface Treatment: Powder coated or hot-dipped galvanized tube welded



GFC77-1



GFC77-2



GFC77-3



GFC77



Prevent Damage and Ensure Safety



Aluminum Tubular Fence



GFC78



GFC79

Prevent Danger and Ensure Safety



3D Fence



3D Fence With Peach Post



Specifications						
Line Width x Cross-Width	Hook Size	Panel Length	Panel Height	Banding No.	Common Color	Surface Treatment
4.0 x 4.0mm		2.0m	800mm	2		1. Hot-dipped galvanized after black wire welded 2. PVC coated after galvanized wire welded 3. PE coated after galvanized wire welded
4.5 x 4.0mm	50 x 90mm	2.2m	1030mm	2	Green RAL6005	
4.5 x 4.5mm	50 x 200mm	2.4m	1230mm	2	Grey RAL7015	
5.0 x 4.0mm	55 x 200mm	2.4m	1530mm	3	Brown RAL8019	
5.0 x 5.0mm	75 x 130mm	2.5m	1830mm	4	Black RAL9005	
6.0 x 5.0mm	100 x 200mm	2.8m	2030mm	4	White RAL9010	
6.0 x 6.0mm		3.0m	2430mm	4		



GF001-1



GF001-2



GF001-3



GF001

27 Prevent Damage and Ensure Safety



3D Fence With Peach Post

Specifications						
Post View	Size	Thickness	Panel Height	Base Post	Normal Post	Surface Treatment
	50 x 70mm 70 x 100mm	1.2mm	800mm	850mm	1200mm	Galvanized with PVC coated
			1000mm	1050mm	1400mm	
			1200mm	1250mm	1600mm	
			1500mm	1550mm	2000mm	
			1800mm	/	2400mm	
			2000mm	/	2600mm	
2200mm	/	2800mm				
2400mm	/	3000mm				



GF002-1



GF002-2



GF002-3



GF002

Prevent Damage and Ensure Safety

28

3D Fence With Square Post



Specifications

Link Width / Cross-Width	Post Size	Panel Length	Panel Height	Banding No.	Common Color	Surface Treatment
			900mm	2		
4.0 x 4.0mm		2.0m	1000mm	2		
4.5 x 4.0mm	50 x 50mm	2.2m	1200mm	2	Green RAL6005	1. Hot-dipped galvanized after black wire welded
4.5 x 4.5mm	50 x 50mm	2.4m	1500mm	3	Grey RAL7015	2. PVC coated after galvanized wire welded
5.0 x 4.0mm	55 x 50mm	2.5m	1800mm	4	Black RAL9005	3. PE coated after galvanized wire welded
5.0 x 5.0mm	75 x 50mm	2.8m	2000mm	4	White RAL9010	
6.0 x 5.0mm	100 x 50mm	3.0m	2500mm	4		
6.0 x 6.0mm			2800mm	4		



GF003-1



GF003-2



GF003-3



GF003-4



GF003



Prevent Damage and Ensure Safety

3D Fence With Rectangle Post



Specifications

Post View	Size	Thickness	Panel Height	Base Post	Normal Post	Surface Treatment
Square Post 	40 x 40mm	1.0mm	900mm	900mm	1200mm	1. Black tube Hot-dipped galvanized 2. Galvanized tube PVC coated
	50 x 50mm	1.1mm	1000mm	1000mm	1400mm	
	60 x 60mm	1.2mm	1200mm	1200mm	1600mm	
Rectangle Post 	30 x 30mm	1.0mm	1500mm	1500mm	2000mm	
	40 x 50mm	1.1mm	1800mm	/	2400mm	
	50 x 60mm	1.2mm	2000mm	/	2600mm	
	60 x 80mm	2.0mm	2200mm	/	2800mm	
	80 x 80mm	2.5mm	2400mm	/	3000mm	



GF004-1



GF004-2



GF004-3



GF004-4



GF004

Prevent Danger and Ensure Safety



3D Fence With Dutch Post



Specifications						
Line Wire Cross Wire	Hook Size	Panel Length	Panel Height	Bending No.	Common Color	Surface Treatment
4.0 x 4.0mm		2.0m	900mm	2		1. Hot-dipped galvanized after black wire welded 2. PVC coated after galvanized wire welded 3. PE coated after galvanized wire welded
4.5 x 4.0mm	50 x 100mm	2.2m	1030mm	2	Green RAL6005	
4.5 x 4.5mm	50 x 200mm	2.4m	1230mm	2	Grey RAL7015	
5.0 x 4.0mm	55 x 200mm	2.4m	1330mm	3	Brown RAL8019	
5.0 x 5.0mm	75 x 130mm	2.5m	1530mm	4	Black RAL9005	
6.0 x 5.0mm	100 x 200mm	2.8m	2030mm	4	White RAL9010	
6.0 x 6.0mm		3.0m	2530mm	4		
			2830mm	4		



GF005-1



GF005-2



GF005-3



GF005



Prevent Danger and Ensure Safety

3D Fence With Round Post



Specifications						
Post View	Size	Thickness	Panel Height	Round Post	Normal Post	Surface Treatment
Dutch Post 	Φ48mm	1.5mm	900mm	90mm	1200mm	1. Black tube Hot-dipped galvanized 2. Galvanized tube PVC coated
	Φ62mm		1030mm	100mm	1400mm	
	Φ75mm		1250mm	1250mm	1600mm	
Round Post 	Φ48mm	2.0mm	1530mm	150mm	2000mm	
	Φ62mm		1830mm	—	2400mm	
	Φ75mm		2030mm	—	2500mm	
	Φ75mm		2530mm	—	3000mm	



GF006-1



GF006-2



GF006-3



GF006

Prevent Danger and Ensure Safety



3D Fence With CM Post



Specifications						
Line Width / Cross-Width	Post Size	Panel Length	Panel Height	Bending No.	Common Color	Surface Treatment
4.0 x 4.0mm		2.0m	900mm	2		1. Hot-dipped galvanized after black wire welded 2. PVC coated after galvanized wire welded 3. PE coated after galvanized wire welded
4.5 x 4.0mm	50 x 100mm	2.2m	1030mm	2	Green RAL6005	
4.5 x 4.5mm	50 x 100mm	2.4m	1230mm	2	Grey RAL7015	
5.0 x 4.0mm	55 x 100mm	2.4m	1330mm	3	Brown RAL8019	
5.0 x 5.0mm	75 x 130mm	2.5m	1530mm	4	Black RAL9005	
6.0 x 5.0mm	100 x 100mm	2.8m	2030mm	4	White RAL9010	
6.0 x 6.0mm		3.0m	2430mm	4		



GPC07-1



GPC07-2



GPC07-3



GPC07

3D Fence With I Type Post



Specifications						
Post View	Size	Thickness	Panel Height	Base Post	Normal Post	Surface Treatment
 CM Post	95 x 95mm 85 x 85mm	1.0mm	900mm	950mm	1200mm	1. Black tube Hot-dipped galvanized 2. Galvanized tube PVC coated
		1.1mm	1000mm	1050mm	1400mm	
		1.2mm	1200mm	1250mm	1600mm	
 I Type Post	44 x 70mm 55 x 100mm	1.5mm	1800mm	/	2400mm	
		1.6mm	2000mm	/	2500mm	
		2.0mm	2200mm	/	2600mm	
		2.5mm	2400mm	/	2800mm	



GPC08-1



GPC08-2



GPC08-3



GPC08

Single Gate



Specifications									
Width	Height	Frame Pipe		Post Size		Mesh Inset		Tube Inset	
		Size	Thickness	Size	Thickness	Wire Dia.	Hole Size	Pipe Size	Distance
0.9m	1.0m								
1.0m	1.3m	30 x 30mm		50 x 60mm	1.5mm	4mm	50 x 100mm		
1.0m	1.3m	40 x 40mm	1.0mm	60 x 60mm	1.0mm	4mm	50 x 200mm	20 x 20mm	100mm
1.2m	1.8m	40 x 50mm	1.5mm	60 x 60mm	2.0mm	5mm	75 x 150mm	20 x 30mm	120mm
1.5m	2.0m	50 x 50mm	2.0mm	60 x 60mm	2.5mm	6mm	75 x 200mm	20 x 30mm	140mm
1.8m	2.3m	50 x 50mm		100 x 100mm	3.0mm		100 x 200mm		
	2.4m								

Surface Treatment

1. Hot-dipped galvanized after black wire and tube welded.
2. Powder coated after galvanized wire and tube welded.



GF009-1

GF009-2

GF009-3

GF009-4



GF008



Prevent Danger and Ensure Safety



Single Gate



GF010

GF011

GF012



GF010

Prevent Danger and Ensure Safety



Double Gate



Specifications									
Width	Height	Frame Pipe		Post Size		Mesh Inset		Tub Inset	
		Size	Thickness	Size	Thickness	Wire Dia.	Hole Size	Pipe Size	Distance
2.0m	1.0m	40 x 60mm	1.5mm	60 x 60mm	1.8mm	4mm	50 x 100mm	20 x 20mm	100mm
3.0m	1.3m								
4.0m	1.6m	30 x 30mm	2.0mm	80 x 80mm	2.0mm	5mm	75 x 150mm	20 x 30mm	120mm
6.0m	2.0m	60 x 60mm	2.5mm	100 x 100mm	2.5mm	6mm	75 x 200mm	20 x 30mm	140mm
6.0m	2.3m	80 x 80mm	2.5mm	100 x 100mm	3.0mm	6mm	100 x 200mm		
	2.4m								

Surface Treatment: 1. Hot-dipped galvanized after black wire and tube welded.
2. Powder coated after galvanized wire and tube welded.



GF014.1



GF014.2



GF014.3



GF011



Prevent Danger and Ensure Safety



Double Gate



GF016



GF016

Prevent Danger and Ensure Safety



Sliding Gate



Specifications									
Width	Height	Frame Pipe		Post Size		Mesh Inset		Tub Inset	
		Size	Thickness	Size	Thickness	W/m Dia	Hole Size	Pipe Size	Distance
4.0m	1.8m	40 x 60mm	1.5mm	60 x 60mm	1.8mm	40mm	60 x 100mm		
4.5m	2.0m	50 x 50mm	2.0mm	60 x 60mm	2.1mm	50mm	60 x 200mm	20 x 20mm	100mm
5.0m	2.2m	50 x 50mm	2.5mm	60 x 60mm	2.3mm	60mm	75 x 150mm	20 x 20mm	120mm
6.0m	2.4m	50 x 50mm	2.5mm		2.0mm	60mm	75 x 200mm		140mm
							100 x 200mm		



GF017-1



GF017-2



GF017-3



GF017



Sliding Gate

Sliding driveway gate products offer an efficient entry to your residential or light commercial property. Our sliding gate is a whole system design with gate panel, guide post, bottom wheel, support wheel, pathway. If requires for a electrically operated gate, motor, rack, control box and other all necessary accessories also available. Its flowing lines, simple and beautiful and full of rich modern residential sensual, garden Light, vibration of high-grade. Simple installation, easy maintenance, easy to clean, affordable, eliminating maintenance.

Sliding gates are great for applications with space restrictions. Swing gates require 12" to 14" of room for a gate to swing into your property. Sliding gates run on the back side of a fence line which great for properties that have width but not depth. It can be used to Country house, Park, Farm, Villadom, Industry entrance and so on.



GF018-1



GF018-2



GF018-3



GF018

Temporary Fence



Australia Temporary Fence



Specifications

Horizontal Wire Dia.	Vertical Wire Dia.	Welded Mesh Hole Size	Chain Link Mesh Hole Size	Panel Length	Panel Height	Frame Tube
3mm	3mm	50 x 70mm 50 x 100mm	50 x 50mm 60 x 60mm	2.2m 2.3m	1.8m 2.1m	Φ72 x 1.4mm Φ52 x 1.8mm
4mm	3mm	65 x 100mm 75 x 150mm	75 x 75mm 100 x 100mm	2.4m		Φ48 x 1.8mm Φ46 x 2.0mm
4mm	4mm	100 x 200mm	100 x 100mm			

Surface Treatment: 1. Hot-dipped galvanized wire and tube welded 2. PVC coated after galvanized wire and tube welded



GF025-1



GF025-2



GF025-3



GF025-4



GF025

43 Prevent Damage and Ensure Safety



Australia Temporary Fence



GF026



GF027

44 Prevent Danger and Ensure Safety

Australia Temporary Fence



GF028



Australia Temporary Fence



GF030



GF031



GF029



GF032

Temporary Fence Gate



GF033



GF034



Temporary Fence Gate



GF005-1



GF005-2



GF005-3



GF005-4



GF006

Plastic Feet



GF035

GF037

GF038

GF039

GF040

GF041

GF042

GF043

GF044

GF045

GF046



American Temporary Fence

Specifications				
Wire Dia.	Chain Link Mesh Hole Size	Panel Length	Panel Height	Frame Type
3.0mm	50x50mm	2.4m	1.8m	Q12 x 2.0mm
3.0mm	60x60mm	3.0m	2.0m	Q48 x 1.5mm
4.0mm	65x65mm	3.0m	2.0m	Q48 x 1.8mm
4.0mm	75x75mm	3.0m	2.0m	Q48 x 2.0mm

Surface Treatment: Hot-dipped galvanized wire and tube welded



GF047-1



GF047-2



GF047-3



GF047

Canada Temporary Fence



- Specifications					
Wire Dia.	Welded Mesh Hole Size	Panel Length	Panel Height	Frame Tube	Inner Tube
	50 x 50mm			25 x 25 x 1.0mm	
3.0mm x 3.0mm	50 x 102mm	2.4m	1.5m	25 x 25 x 1.2mm	20 x 20 x 1.0mm
3.5mm x 3.5mm	50 x 102mm	2.6m	2.0m	25 x 25 x 1.5mm	20 x 20 x 1.2mm
4.0mm x 3.0mm	75 x 150mm	3m	2.1m	25 x 25 x 1.8mm	20 x 20 x 1.5mm
4.0mm x 4.0mm	60 x 200mm	3.6m		35 x 35 x 2.0mm	
	100 x 200mm				

Surface Treatment: 1. Hot-dipped galvanized wire and tube welded; 2. PVC coated after galvanized wire and tube welded; 3. Hot-dipped galvanized after black wire and tube welded.



GF040-1



GF040-2



GF040-3



GF040



Canada Temporary Fence



GF040



GF050



GF050

Crowd Control Barrier



American Crowd Control Barrier



Specifications					
Panel Length	Panel Height	Frame Tube	Inner Tube	Inner Tube Distance	Feet
6.5'	39"	Φ38 × 1.5mm	Φ12 × 1.2mm	110mm	Flat feet: 60 × 580 × 6mm Bridge feet: 67.5 × 90cm
7.0'	41"	Φ38 × 1.8mm	Φ12 × 1.5mm	120mm	Length × Width: 67.5 × 90cm
7.5'	42"	Φ38 × 2.0mm	Φ12 × 1.5mm	130mm	V shape leaf height: 270mm
8.0'	43"	Φ38 × 2.0mm	Φ12 × 1.5mm	140mm	
8.5'	44"	Φ38 × 2.0mm	Φ12 × 1.5mm	150mm	

Surface Treatment: 1. Hot-dipped galvanized wire and tube welded 2. PVC coated after galvanized wire and tube welded 3. Hot-dipped galvanized after black wire and tube welded



GF052-1



GF052-2



GF052-3



GF052

American Crowd Control Barrier



GF053



GF054



GF055



GF056



GF057

European Crowd Control Barrier



Specifications

Panel Length	Panel Height	Frame Tube	Inner Tube	Inner Tube Distance	Feet
2.0m	900mm	Φ38 x 1.5mm	Φ16 x 1.2mm	110mm	Flat feet: 50 x 50 x 6mm
2.2m	1000mm	Φ38 x 1.8mm	Φ16 x 1.5mm	120mm	Bridge feet: 47.5 x 50mm
2.2m	1100mm	Φ38 x 2.0mm	Steel mat	120mm	V straps feet height: 270mm
2.5m	1200mm	Φ48 x 1.5mm Φ48 x 2.0mm	Φ12mm	100mm	

Surface Treatment: 1. Hot-dipped galvanized wire and tube welded
2. Hot-dipped galvanized after black wire and tube welded



GF001-1



GF001-2



GF001-3



GF001

European Crowd Control Barrier



GF001



GF001



GF001

Australia Crowd Control Barrier



Specifications

Panel Length	Panel Height	Frame Tube	Inner Tube	Inner Tube Distance	Feet
1050mm	900mm	Φ25 x 1.0mm	Φ20 x 1.0mm	110mm	Flat feet
3000mm	1000mm	Φ25 x 1.2mm	Φ20 x 1.2mm	120mm	50 x 50 x 6 mm
2100mm	1100mm	Φ25 x 1.6mm	Φ20 x 1.2mm	150mm	Bridge feet: 47.5 x 60mm
3300mm	1500mm	Φ25 x 2.0mm	Φ20 x 1.5mm	190mm	Length x Width: 67.5 x 90cm

Surface Treatment: 1. Hot-dipped galvanized wire and tube welded 2. PVC coated after galvanized wire and tube welded 3. Hot-dipped galvanized after black wire and tube welded



GP002-1



GP002-2



GP002-3



GP002

Australia Crowd Control Barrier



GP003



GP004

Roll Top Fence



Specifications					
Wire Dia.	Mesh Size	Panel Length	Panel Height	Common Color	Surface Treatment
			800mm		
4.0 x 4.0mm	50 x 100mm	2.0m	1000mm	Green RAL6005	1. Hot-dipped galvanized after black wire weld joint
4.5 x 4.0mm	50 x 200mm	2.2m	1200mm	Grey RAL7016	2. PVC coated after galvanized wire welded
4.5 x 4.5mm	55 x 200mm	2.4m	1500mm	Brown RAL8019	3. PE coated after galvanized wire welded
5.0 x 4.0mm	75 x 150mm	2.5m	1600mm	Black RAL9005	
6.0 x 5.0mm	100 x 80mm	2.6m	1800mm	White RAL9010	



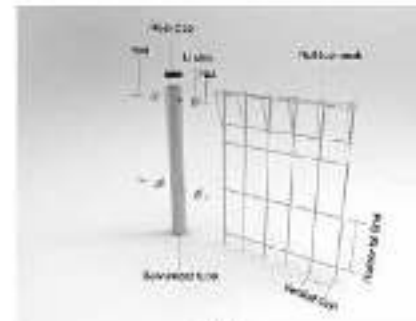
GF000

61 Prevent Danger and Ensure Safety



Roll Top Fence

Specifications						
Post View	Size	Thickness	Panel Height	Base Post	Normal Post	Surface Treatment
 Square Post	40 x 40mm	1.5mm 1.8mm 2.0mm 2.5mm	800mm	660mm	1200mm	1. Black tube Hot-dipped galvanized 2. Galvanized tube PVC coated
	50 x 50mm		1000mm	1050mm	1400mm	
	60 x 60mm		1200mm	1200mm	1600mm	
 Round Post	Φ48mm	1500mm	1500mm	2000mm		
	Φ60mm	1800mm	/	2400mm		
	Φ75mm	2000mm	/	2800mm		



GF001



GF002



GF003



GF004

62 Prevent Danger and Ensure Safety

Palisade Fence



Specifications						
Pale Section	Thickness of Pale	Standard Pale Pos	Standard Fence Width	Height	Angle Rail	Surface Treatment
10' Section	2.0mm	17 Pales	2.7m	1800mm	40 x 40 x 4mm	1. Hot-dipped galvanized
	2.5mm			2000mm		
	3.0mm			2100mm		
12' Section	2.5mm			2400mm		
	3.0mm			2400mm		
	3.5mm			3000mm		



GF00-1



GF00-2



GF00-3



GF00



Prevent Danger and Ensure Safety

Palisade Fence

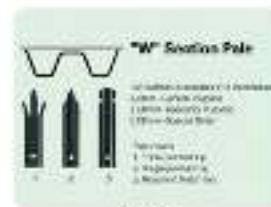


Specifications					
Post View	Post Size	Thickness	Pale Height	Post Height	Link Mode
H Post 	65 x 100mm 75 x 100mm	5.0mm	1000mm 2000mm 2700mm	2400mm 2600mm 2700mm	
		6.0mm			
		8.0mm			
Square Post 	60 x 60mm 80 x 80mm 100 x 100mm	2.0mm	2400mm 3000mm 4000mm	2400mm 3000mm 4000mm	
		2.5mm			
		3.0mm			
		3.5mm			

Surface Treatment: 1. Hot-dipped galvanized 2. Powder coated



GF01-1



GF01-2



GF01-3



GF01

Prevent Danger and Ensure Safety



Decofor Panel Fence



• Specifications				
Wire Dia.	Hole Size	Length	Height	No. of Ribs
			1500mm	3
545mm	90 x 200mm	3000mm	1800mm	4
856mm	75 x 150mm	2300mm	2000mm	4
			2300mm	5
846mm	100 x 200mm	3000mm	2400mm	5
			2800mm	6
Surface Treatment		1. Hot dipped galvanized after black wire welded 2. Powder coated after galvanized wire welded 3. Powder coated after black wire welded		



GF004-1



GF004-2



GF004-3



GF004

Double Horizontal Wire Fence



• Specifications					
Post View	Size	Thickness	Panel Height	Post Length	Surface Treatment
Square Post 	40 Dmm	1.0mm	1500mm	2000mm	1. Black tube Hot-dipped galvanized 2. Galvanized tube PVC coated
	50 Dmm	1.1mm			
	60 Dmm	1.2mm			
Rectangular Post 	30 Dmm	1.5mm			
	40 Dmm	1.8mm			
	60 Dmm	2.0mm			
Round Post 	50 Dmm	2.5mm	2300mm	2800mm	
	60 Dmm	2.5mm	2400mm	3000mm	
	70 Dmm	2.5mm	2800mm	3400mm	



GF005-1



GF005-2



GF005-3



GF005

Edge Protection Fence



Specifications

Wire Diameter	Mesh Size	Length	Height	Round Post	Square Post
5mm x 4mm	75 x 75mm	1.5m	1.3m	48 x 2mm	50 x 50 x 2mm
5mm x 5mm	50 x 100mm	2.0m	1.4m	60 x 2mm	60 x 60 x 2mm
5mm x 6mm	50 x 200mm	2.5m	1.5m	60 x 2mm	60 x 60 x 2mm
5mm x 6mm	50 x 200mm	3.0m	1.5m		



GF005-1



GF005-2



GF005-3



GF005

67

Prevent Danger and Ensure Safety

Edge Protection Fence



Specifications

Wire Diameter	Mesh Size	Length	Height	Bending Degree	Round Post
5mm x 4mm	75 x 75mm	1.5m	1.2m	90°	48 x 2mm
5mm x 5mm	50 x 100mm	2.0m	1.3m	90°	60 x 2mm
5mm x 5mm	50 x 200mm	2.5m	1.4m	120°	60 x 2mm
5mm x 5mm	75 x 150mm	3.0m	1.5m		



GF006-1



GF006-2



GF006-3



GF006

Prevent Danger and Ensure Safety

68

Fall Protection Fence



Specifications							
Height	Posts No.	Length	Pipe Tube	Thickness	Post	Thickness	Color
0.9m		2.0m		1.2mm			
1.1m	2 posts	2.2m	Ø48	1.5mm	50 x 50mm	1.0mm	Yellow
1.3m	3 posts	2.4m	50 x 50mm	1.8mm	60 x 60mm	1.8mm	Orange
1.5m		3.0m		2.0mm		2.0mm	Red

Fall protection fence also named edge protection fence, it is fully used in construction under building to protect people. Components are robust and are painted or Galvalume finished for a long life and exposure to extreme weather climates. The use of Systemized Temporary Edge Protection Fence makes a significant contribution to the reduction of falls on site due to ease of use, increased safety and compliance to EN 13374.



GF067-1



GF067-2



GF067-3



GF067



Fall Protection Fence



GF068



GF068

Airport Fence



Specifications						
Line Wire / Cross Wire	Hook Size	Panel Length	Panel Height	Bending No.	Common Color	Surface Treatment
4.5 x 4.5mm	50 x 100mm	2.0m	1830mm	4	Green RAL6005	1. Hot-dipped galvanized after black wire welded
5.0 x 4.0mm	50 x 200mm	2.2m	2030mm	4	Grey RAL7010	2. PVC coated after galvanized wire welded
5.0 x 5.0mm	65 x 200mm	2.5m	2230mm	4	Black R4-300B	3. PE coated after galvanized wire welded
6.0 x 5.0mm	100 x 300mm	3.0m	2430mm	4	White R4-301B	4. PE coated after galvanized wire welded



GF002-1



GF002-2



GF002-3



GF002

71 Prevent Danger and Ensure Safety

Airport Fence



Specifications						
Post Type	Size	Thickness	Panel Height	Panel Length	Arm Length	Surface Treatment
 Double arm post	50 x 50mm	1.8mm	1830mm	2400mm	900mm	1. Black tube Hot-dipped galvanized 2. Galvanized tube PVC coated
	60 x 60mm	2.0mm	2030mm	2900mm	450mm	
	80 x 80mm	2.5mm	2230mm	2900mm	900mm	
	100 x 100mm	3.0mm	2430mm	3200mm	950mm	



GF003-1



GF003-2



GF003-3



GF003

72 Prevent Danger and Ensure Safety

Double Circle Fence



Specifications

Wire Dia.	Hot Size	Panel Length	Panel Height	Bending No.	Common Code	Surface Treatment
4.5mm	50 x 100mm	2.0m	1850mm	2	Green PAL50M	1. Hot-dipped galvanized after black wire welded 2. PVC coated after galvanized wire welded
4.5mm	50 x 200mm	2.0m	1280mm	2	Gray PAL 70M	
5.0mm	50 x 200mm	2.4m	1530mm	3	Brown PAL5019	
4.0mm	75 x 150mm	2.5m	1600mm 2080mm	4	Black PAL6002 White PAL6010	



GF068-1



GF068-2



GF068-3



GF068



Double Circle Fence

Specifications

Post View	Size	Thickness	Panel Height	Base Post	Normal Post	Surface Treatment
Square Post	40 x 40mm	1.2mm	800mm	600mm	1200mm	1. Black zinc Hot-dipped galvanized 2. Galvanized tube PVC coated
	50 x 50mm		1035mm	1050mm	1400mm	
	60 x 60mm		1335mm	1250mm	1600mm	
Round Post	φ48mm	1.8mm	1630mm	1550mm	2000mm	
	φ60mm	2.0mm	1830mm	/	2400mm	
	φ75mm	2.5mm	2030mm	/	2500mm	



GF069-1



GF069-2



GF069-3



GF069

Fence Accessories



Fittings



Fence Accessories

Fittings



RAL Color Chart

Due to the different printing effect, color will be different with the real color.



RAL 1000 Cream Beige	RAL 2000 Bright Red Orange	RAL 4007 Purple Violet
RAL 1001 Beige	RAL 2009 Traffic Orange	RAL 4008 Signal Violet
RAL 1002 Sand Yellow	RAL 2010 Signal Orange	RAL 4009 Porch Violet
RAL 1003 Signal Yellow	RAL 2011 Deep Orange	RAL 4011 Teal Magenta
RAL 1004 Golden Yellow	RAL 2012 Salmon Orange	RAL 5003 Violet Blue
RAL 1005 Honey Yellow	RAL 3000 Flame Red	RAL 5001 Green Blue
RAL 1006 Major Yellow	RAL 3001 Signal Red	RAL 5002 Ultramarine
RAL 1007 Dark Yellow	RAL 3007 Carmine Red	RAL 5004 Sapphire Blue
RAL 1011 Brown Beige	RAL 3005 Ruby Red	RAL 6004 Rock Blue
RAL 1012 Lemon Yellow	RAL 3004 Purple Red	RAL 6005 Signal Blue
RAL 1013 Oyster White	RAL 3005 Wine Red	RAL 5007 Brilliant Blue
RAL 1014 Dark Ivory	RAL 3007 Black Red	RAL 5008 Grey Blue
RAL 1015 Light Ivory	RAL 3009 Oxide Red	RAL 5009 Azuro Blue
RAL 1018 Sulfur Yellow	RAL 3011 Brown Red	RAL 6013 Gentian Blue
RAL 1017 Sulfur Yellow	RAL 3012 Beige Red	RAL 6011 Skat Blue
RAL 1018 Zinc Yellow	RAL 3013 Tomato Red	RAL 5012 Light Blue
RAL 1019 Gray Beige	RAL 3014 Arrow Pink	RAL 5013 Cobalt Blue
RAL 1020 Olive Yellow	RAL 3015 Light Pink	RAL 6014 Pigment Blue
RAL 1021 Rape Yellow	RAL 3016 Coral Red	RAL 6015 Sky Blue
RAL 1022 Traffic Yellow	RAL 3017 Rose	RAL 5017 Turb. Blue
RAL 1024 Ochre Yellow	RAL 3018 Strawberry Red	RAL 5018 Turquoise Blue
RAL 1027 Curry	RAL 3020 Traffic Red	RAL 5019 Capri Blue
RAL 1028 Mellow Yellow	RAL 3022 Salmon Pink	RAL 6023 Ocean Blue
RAL 1032 Mellow Yellow	RAL 3027 Raspberry Red	RAL 6021 Water Blue
RAL 1033 Delta Yellow	RAL 3021 Cherry Red	RAL 5022 Night Blue
RAL 1004 Pastel Yellow	RAL 4001 Red Lilac	RAL 5023 Emerald Blue
RAL 2000 Yellow Orange	RAL 4002 Red Violet	RAL 5024 Porch Blue
RAL 2001 Red Orange	RAL 4003 Leather Violet	RAL 6020 Porch Green
RAL 2002 Vermilion	RAL 4004 Red Violet	RAL 6001 Emerald Green
RAL 2003 Pastel Orange	RAL 4005 Blue Lilac	RAL 6002 Leaf Green
RAL 2004 Pure Orange	RAL 4006 Traffic Purple	RAL 6003 Olive Green



Due to the different printing effect, color will be different with the real color.

RAL Color Chart

RAL 6004 Brown Green	RAL 7332 Olive Grey	RAL 7044 Silk Grey
RAL 6005 Moss Green	RAL 7333 Moss Grey	RAL 9000 Green Brown
RAL 6006 Grey Olive	RAL 7334 Signal Grey	RAL 9001 Ochre Brown
RAL 6007 Herb Green	RAL 7335 Marine Grey	RAL 9002 Signal Brown
RAL 6008 Brown Green	RAL 7336 Beige Grey	RAL 9003 Clay Brown
RAL 6009 IV Green	RAL 7338 Khaki Grey	RAL 9004 Copper Brown
RAL 6010 Green Green	RAL 7339 Green Grey	RAL 9007 Fawn Brown
RAL 6011 Ravenna Green	RAL 7310 Topaz Grey	RAL 9008 Olive Brown
RAL 6012 Black Green	RAL 7311 Iron Grey	RAL 9011 Nut Brown
RAL 6013 Road Green	RAL 7312 Basalt Grey	RAL 9012 Red Brown
RAL 6014 Yellow Olive	RAL 7313 Brown Grey	RAL 9014 Sepia Brown
RAL 6015 Black Olive	RAL 7315 Slate Grey	RAL 9015 Chestnut Brown
RAL 6016 Turquoise Green	RAL 7316 Amethyst Grey	RAL 9016 Mahogany Brown
RAL 6017 May Green	RAL 7321 Black Grey	RAL 9017 Chocolate Brown
RAL 6018 Yellow Green	RAL 7322 Inkjet Grey	RAL 9018 Gray Brown
RAL 6019 Pastel Green	RAL 7323 Concrete Grey	RAL 9022 Black Brown
RAL 6020 Chrome Green	RAL 7324 Graphite Grey	RAL 9023 Orange Brown
RAL 6021 Past Green	RAL 7326 Quartz Grey	RAL 9024 Beige Brown
RAL 6022 Olive Olive	RAL 7330 Stone Grey	RAL 9025 Pale Brown
RAL 6024 Traffic Green	RAL 7331 Blue Grey	RAL 9026 Terra Brown
RAL 6025 Fern Green	RAL 7332 Pebble Grey	RAL 9001 Cream
RAL 6026 Opal Green	RAL 7333 Desert Grey	RAL 9002 Grey White
RAL 6027 Light Green	RAL 7334 Yellow Grey	RAL 9003 Signal White
RAL 6028 Hay Green	RAL 7335 Light Grey	RAL 9004 Signal Black
RAL 6029 Mint Green	RAL 7336 Platinum Grey	RAL 9005 Jet Black
RAL 6030 Signal Green	RAL 7337 Dusty Grey	RAL 9010 Pure White
RAL 6031 Mint Turquoise	RAL 7338 Aqua Grey	RAL 9011 Graphite
RAL 6034 Pastel Turquoise	RAL 7339 Quartz Grey	RAL 9016 Traffic White
RAL 6035 Pearl Green	RAL 7340 Window Grey	RAL 9017 Traffic Black
RAL 7000 Squirrel Grey	RAL 7342 Traffic Grey A	RAL 9018 Paper White
RAL 7001 Silver Grey	RAL 7343 Traffic Grey B	

Color Analysis Color Chart
1. 19931186-0810 (code of color)
2. 19931186-0810 (code of color)

Common Gauge Size and Diameter Comparison List



Gauge No.	SWG (British Standard)		BSW (British Standard)		SI		ANSI (American Standard)	
	Size	mm	Size	mm	Size	mm	Size	mm
70	0.5	12.7			0.889	22.52		
80	0.864	21.798			0.925	23.51	0.86	21.72
90	1.00	25.40	1.0	25.4	1.000	25.40	0.914	23.174
10	1.6	41.27	0.625	15.875	1.615	41.27	0.6	15.24
20	0.375	9.525	0.425	10.765	0.5	12.7	0.354	9.014
30	0.318	8.09	0.36	9.14	0.452	11.30	0.354	9.0
40	0.324	8.23	0.343	8.69	0.396	10.05	0.323	8.22
50	0.300	7.62	0.300	7.62	0.305	7.74	0.293	7.44
60	0.275	7.01	0.264	6.704	0.252	6.401	0.265	6.73
70	0.250	6.35	0.254	6.451	0.254	6.451	0.254	6.451
80	0.228	5.79	0.228	5.79	0.228	5.79	0.228	5.79
90	0.212	5.36	0.202	5.09	0.202	5.09	0.202	5.09
100	0.190	4.82	0.200	5.08	0.191	4.84	0.190	4.81
110	0.175	4.42	0.180	4.57	0.176	4.46	0.164	4.15
120	0.160	4.06	0.165	4.19	0.160	4.06	0.152	3.86
130	0.144	3.64	0.144	3.65	0.138	3.50	0.134	3.40
140	0.128	3.25	0.134	3.40	0.125	3.17	0.121	3.07
150	0.116	2.94	0.120	3.04	0.113	2.87	0.107	2.71
160	0.104	2.64	0.108	2.74	0.101	2.57	0.093	2.35
170	0.096	2.43	0.095	2.41	0.088	2.24	0.079	2.00
180	0.088	2.23	0.083	2.10	0.076	1.94	0.067	1.69
190	0.082	2.08	0.078	1.98	0.071	1.79	0.061	1.54
200	0.076	1.92	0.074	1.88	0.067	1.69	0.058	1.47
210	0.070	1.78	0.068	1.73	0.061	1.54	0.052	1.32
220	0.064	1.62	0.062	1.57	0.055	1.39	0.046	1.17
230	0.058	1.47	0.056	1.42	0.049	1.24	0.040	1.01
240	0.052	1.32	0.050	1.27	0.043	1.09	0.034	0.86
250	0.046	1.17	0.044	1.12	0.037	0.93	0.028	0.71
260	0.040	1.01	0.038	0.96	0.031	0.78	0.022	0.55
270	0.034	0.86	0.032	0.81	0.025	0.63	0.016	0.40
280	0.028	0.71	0.026	0.66	0.019	0.48	0.010	0.25
290	0.022	0.56	0.020	0.50	0.013	0.33	0.004	0.10
300	0.016	0.41	0.014	0.35	0.007	0.18	0.001	0.02
310	0.010	0.25	0.008	0.20	0.001	0.02	0.000	0.00
320	0.004	0.10	0.002	0.05	0.000	0.00	0.000	0.00
330	0.002	0.05	0.001	0.02	0.000	0.00	0.000	0.00
340	0.001	0.02	0.000	0.01	0.000	0.00	0.000	0.00
350	0.000	0.00	0.000	0.00	0.000	0.00	0.000	0.00



Tube Specifications Imperial & Metric Comparison Table

Gauge No.	SWG (British Standard)		BSW (British Standard)		SI		ANSI (American Standard)	
	Size	mm	Size	mm	Size	mm	Size	mm
10	1.6	41.27	0.625	15.875	1.615	41.27	0.6	15.24
20	0.375	9.525	0.425	10.765	0.5	12.7	0.354	9.014
30	0.318	8.09	0.36	9.14	0.452	11.30	0.354	9.0
40	0.324	8.23	0.343	8.69	0.396	10.05	0.323	8.22
50	0.300	7.62	0.300	7.62	0.305	7.74	0.293	7.44
60	0.275	7.01	0.264	6.704	0.252	6.401	0.265	6.73
70	0.250	6.35	0.254	6.451	0.254	6.451	0.254	6.451
80	0.228	5.79	0.228	5.79	0.228	5.79	0.228	5.79
90	0.212	5.36	0.202	5.09	0.202	5.09	0.202	5.09
100	0.190	4.82	0.200	5.08	0.191	4.84	0.190	4.81
110	0.175	4.42	0.180	4.57	0.176	4.46	0.164	4.15
120	0.160	4.06	0.165	4.19	0.160	4.06	0.152	3.86
130	0.144	3.64	0.144	3.65	0.138	3.50	0.134	3.40
140	0.128	3.25	0.134	3.40	0.125	3.17	0.121	3.07
150	0.116	2.94	0.120	3.04	0.113	2.87	0.107	2.71
160	0.104	2.64	0.108	2.74	0.101	2.57	0.093	2.35
170	0.096	2.43	0.095	2.41	0.088	2.24	0.079	2.00
180	0.088	2.23	0.083	2.10	0.076	1.94	0.067	1.69
190	0.082	2.08	0.078	1.98	0.071	1.79	0.061	1.54
200	0.076	1.92	0.074	1.88	0.067	1.69	0.058	1.47
210	0.070	1.78	0.068	1.73	0.061	1.54	0.052	1.32
220	0.064	1.62	0.062	1.57	0.055	1.39	0.046	1.17
230	0.058	1.47	0.056	1.42	0.049	1.24	0.040	1.01
240	0.052	1.32	0.050	1.27	0.043	1.09	0.034	0.86
250	0.046	1.17	0.044	1.12	0.037	0.93	0.028	0.71
260	0.040	1.01	0.038	0.96	0.031	0.78	0.022	0.55
270	0.034	0.86	0.032	0.81	0.025	0.63	0.016	0.40
280	0.028	0.71	0.026	0.66	0.019	0.48	0.010	0.25
290	0.022	0.56	0.020	0.50	0.013	0.33	0.004	0.10
300	0.016	0.41	0.014	0.35	0.007	0.18	0.001	0.02
310	0.010	0.25	0.008	0.20	0.001	0.02	0.000	0.00
320	0.004	0.10	0.002	0.05	0.000	0.00	0.000	0.00
330	0.002	0.05	0.001	0.02	0.000	0.00	0.000	0.00
340	0.001	0.02	0.000	0.01	0.000	0.00	0.000	0.00
350	0.000	0.00	0.000	0.00	0.000	0.00	0.000	0.00

Conversion Tables

Unit	Conversion	Conversion	Conversion
Length	1 inch = 25.4 mm 1 foot = 304.8 mm 1 mile = 1609.344 m 1 yard = 0.9144 m	1000 ft = 304.8 m 1000 yd = 914.4 m 1000 mi = 1609.344 km	1000 in = 25.4 m 1000 ft = 304.8 m 1000 yd = 914.4 m 1000 mi = 1609.344 km
Volume	1 cu ft = 0.0283168 m³ 1 cu yd = 0.764555 m³ 1 cu in = 0.00016387 m³	1 cu ft = 0.0283168 m³ 1 cu yd = 0.764555 m³ 1 cu in = 0.00016387 m³	1 cu ft = 0.0283168 m³ 1 cu yd = 0.764555 m³ 1 cu in = 0.00016387 m³
Area	1 sq ft = 0.092903 m² 1 sq yd = 0.836127 m² 1 sq in = 0.00064516 m²	1 sq ft = 0.092903 m² 1 sq yd = 0.836127 m² 1 sq in = 0.00064516 m²	1 sq ft = 0.092903 m² 1 sq yd = 0.836127 m² 1 sq in = 0.00064516 m²
Weight	1 lb = 0.453592 kg 1 oz = 0.0283495 kg 1 ton = 2000 lb = 907.185 kg	1 lb = 0.453592 kg 1 oz = 0.0283495 kg 1 ton = 2000 lb = 907.185 kg	1 lb = 0.453592 kg 1 oz = 0.0283495 kg 1 ton = 2000 lb = 907.185 kg
Temperature	1 °F = 0.5556 °C 1 °C = 1.8 °F	1 °F = 0.5556 °C 1 °C = 1.8 °F	1 °F = 0.5556 °C 1 °C = 1.8 °F