



# One-Stop Fencing Solution



Youtube



Facebook



LinkedIn



Twitter



**Hebei Giant Metal Technology Co., Ltd**

ADD:No.21 Weier Road,High and New Tech Development Zone,Anping County.

**Anping Office:**

Tel: 0086-318-5185510

M.P.: 0086-19933186141 (Wechat, Whatsapp)

Web: www.giantfence.com

Email: sales@giantfence.com

# Hebei Giant Metal Technology Co., Ltd





## Company Introduction

Hebei Giant Metal Technology Co., Ltd (referred to as Giant Fence), Located in the hometown of the Wire Mesh of China - Anping County, Hebei Province, P. R. China.

Giant Fence was founded in 2014, we determined to make the Giant Fence to be a transnational innovation enterprise, by taking the idea of ' Good Product, Realized Price service ' and to the whole shareholding system oriented.

Our main business is research and develops, produce and sell metal fence, Tubular fence, security fence, Chain link fence and other kinds of wire mesh products. Our Products are mainly used in residential, villas, stadiums, highways, railways, prisons, airports, rivers and other fields. We has passed the qualitymanagement system ISO9001:2015, environmental management system ISO14001 : 2015, management system GB / ISO45001: 2018. We have exported more than 10 countries and regions, mainly United States, Canada, Australia, Japan, and France.

Giant Fence adhere to the technical and management model innovation, to meet market competition and customer needs;adhere to the modern production equipment and complete quality control process to ensure that the product delivery and quality; adhere to the "won ' t send defective", won customers ' trust and support.

**Vision:**To become the world ' s most respected fencing enterprise

**Mission:**Prevent danger and ensure safety

**Core values:**Cusromer first、 Integrity、 innovation、 Share、 Gratitude、 Win-win

## Certification





# Workshop



Panel welding



Bending workshop



PE coating



PVC coating



Welding workshop



Post workshop



Packing



Loading



Factory gate

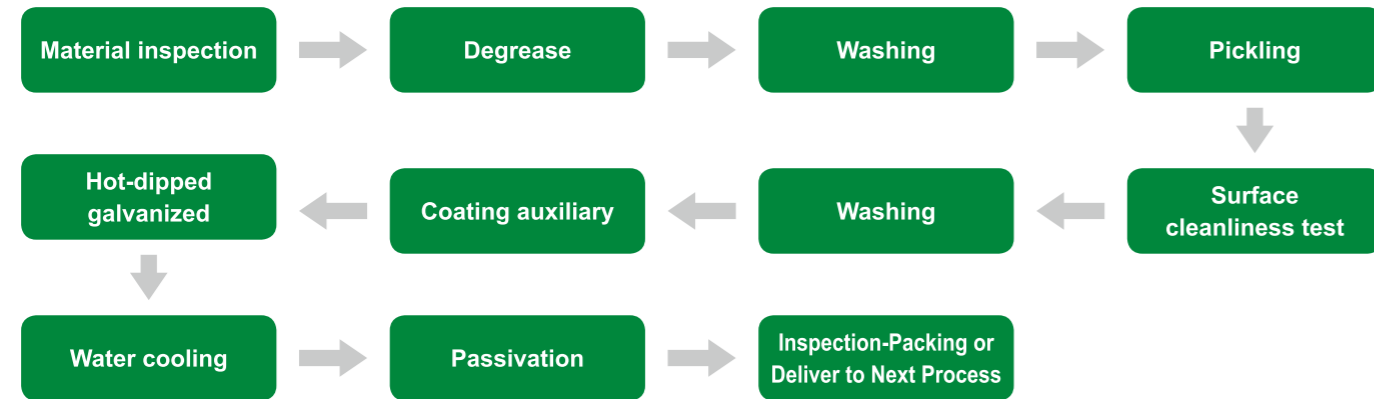


Warehouse

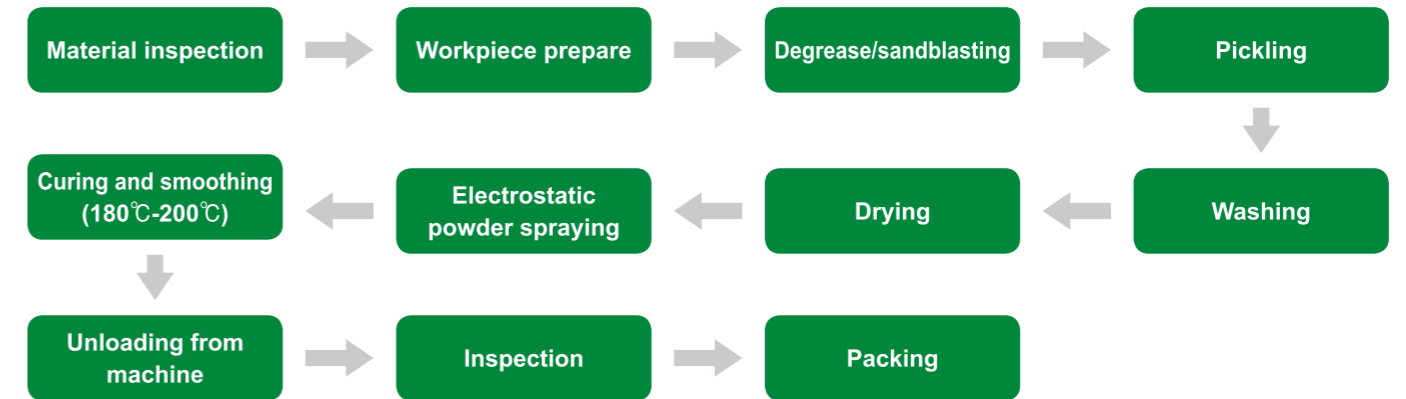


# Processing Technic

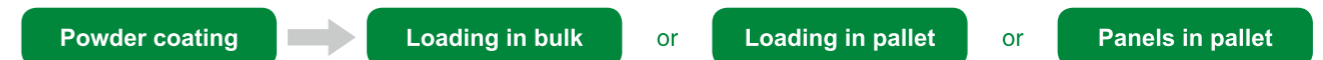
## Hot-Dipped Galvanization



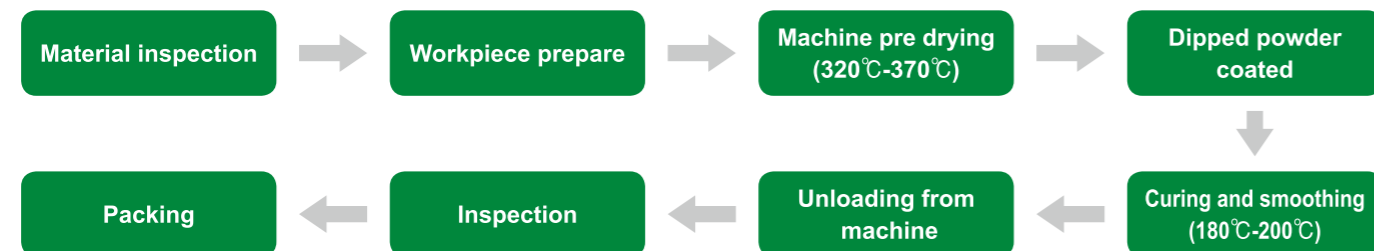
## PVC Coating



## Production Process



## PE Coating





# Giant Team





# *3D Fence*





# 3D Fence With Peach Post



• Specifications						
Line Wire × Cross Wire	Hole Size	Panel Length	Panel Height	Bending No.	Common Color	Surface Treatment
4.0 × 4.0mm	50 × 100mm 50 × 200mm 55 × 200mm 75 × 150mm 100 × 300mm	2.0m 2.2m 2.4m 2.5m 2.8m 3.0m	830mm	2	Green RAL6005 Grey RAL7016 Brown RAL8019 Black RAL9005 White RAL9010	1. Hot-dipped galvanized after black wire welded 2. PVC coated after galvanized wire welded 3. PE coated after galvanized wire welded
4.5 × 4.0mm			1030mm	2		
4.5 × 4.5mm			1230mm	2		
5.0 × 4.0mm			1530mm	3		
5.0 × 5.0mm			1830mm	4		
6.0 × 5.0mm			2030mm	4		
6.0 × 6.0mm			2230mm	4		
			2430mm	4		



GF001-1



GF001-2



GF001-3



GF001



# 3D Fence With Peach Post

• Specifications						
Post View	Size	Thickness	Panel Height	Base Post	Normal Post	Surface Treatment
	50 × 70mm	1.2mm	830mm	850mm	1200mm	Galvanized tube PVC coated
			1030mm	1050mm	1400mm	
			1230mm	1250mm	1600mm	
			1530mm	1550mm	2000mm	
	70 × 100mm		1830mm	/	2400mm	
			2030mm	/	2500mm	
			2230mm	/	2800mm	
			2430mm	/	3000mm	



GF002-1



GF002-2



GF002-3



GF002



# 3D Fence With Square Post



• Specifications						
Line Wire × Cross Wire	Hole Size	Panel Length	Panel Height	Bending No.	Common Color	Surface Treatment
4.0 × 4.0mm	50 × 100mm 50 × 200mm 55 × 200mm 75 × 150mm 100 × 300mm 100 × 300mm 6.0 × 6.0mm	2.0m 2.2m 2.4m 2.5m 2.8m 3.0m	830mm	2	Green RAL6005 Grey RAL7016 Brown RAL8019 Black RAL9005 White RAL9010	1. Hot-dipped galvanized after black wire welded 2. PVC coated after galvanized wire welded 3. PE coated after galvanized wire welded
4.5 × 4.0mm			1030mm	2		
4.5 × 4.5mm			1230mm	2		
5.0 × 4.0mm			1530mm	3		
5.0 × 5.0mm			1830mm	4		
6.0 × 5.0mm			2030mm	4		
6.0 × 5.0mm			2230mm	4		
6.0 × 6.0mm			2430mm	4		



GF003-1



GF003-2



GF003-3



GF003-4

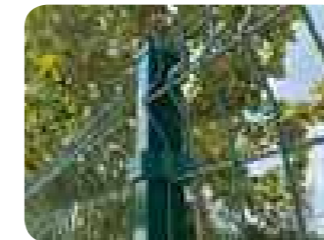


GF003



# 3D Fence With Rectangle Post

• Specifications						
Post View	Size	Thickness	Panel Height	Base Post	Normal Post	Surface Treatment
Square Post 	40 × 40mm	1.0mm	830mm	850mm	1200mm	1. Black tube Hot-dipped galvanized 2. Galvanized tube PVC coated
	50 × 50mm	1.1mm	1030mm	1050mm	1400mm	
	60 × 60mm	1.2mm	1230mm	1250mm	1600mm	
		1.5mm	1530mm	1550mm	2000mm	
		1.8mm	1830mm	/	2400mm	
Rectangle Post 	30 × 50mm	2.0mm	2030mm	/	2500mm	
	40 × 60mm	2.5mm	2230mm	/	2800mm	
	60 × 80mm		2430mm	/	3000mm	



GF004-1



GF004-2



GF004-3



GF004-4



GF004



# 3D Fence With Dutch Post



• Specifications						
Line Wire × Cross Wire	Hole Size	Panel Length	Panel Height	Bending No.	Common Color	Surface Treatment
4.0 × 4.0mm	50 × 100mm 50 × 200mm 55 × 200mm 75 × 150mm 100 × 300mm 100 × 300mm 6.0 × 6.0mm	2.0m 2.2m 2.4m 2.5m 2.8m 3.0m	830mm	2	Green RAL6005 Grey RAL7016 Brown RAL8019 Black RAL9005 White RAL9010	1. Hot-dipped galvanized after black wire welded 2. PVC coated after galvanized wire welded 3. PE coated after galvanized wire welded
4.5 × 4.0mm			1030mm	2		
4.5 × 4.5mm			1230mm	2		
5.0 × 4.0mm			1530mm	3		
5.0 × 5.0mm			1830mm	4		
6.0 × 5.0mm			2030mm	4		
6.0 × 6.0mm			2230mm	4		
6.0 × 6.0mm			2430mm	4		



GF005-1



GF005-2



GF005-3



GF005

# 3D Fence With Round Post



• Specifications						
Post View	Size	Thickness	Panel Height	Base Post	Normal Post	Surface Treatment
 Dutch Post	$\Phi$ 48mm $\Phi$ 60mm	1.5mm 1.8mm 2.0mm	830mm	850mm	1200mm	1. Black tube Hot-dipped galvanized 2. Galvanized tube PVC coated
			1030mm	1050mm	1400mm	
			1230mm	1250mm	1600mm	
			1530mm	1550mm	2000mm	
 Round Post	$\Phi$ 48mm $\Phi$ 60mm $\Phi$ 75mm	1.5mm 1.8mm 2.0mm	1830mm	/	2400mm	
			2030mm	/	2500mm	
			2230mm	/	2800mm	
			2430mm	/	3000mm	



GF006-1



GF006-2



GF006-3



GF006



## 3D Fence With BD Post



### • Specifications

Line Wire × Cross Wire	Hole Size	Panel Length	Panel Height	Bending No.	Common Color	Surface Treatment
4.0 × 4.0mm	50 × 100mm 50 × 200mm 55 × 200mm 75 × 150mm 100 × 300mm	2.0m 2.2m 2.4m 2.5m 2.8m 3.0m	830mm	2	Green RAL6005 Grey RAL7016 Brown RAL8019 Black RAL9005 White RAL9010	1. Hot-dipped galvanized after black wire welded 2. PVC coated after galvanized wire welded 3. PE coated after galvanized wire welded
4.5 × 4.0mm			1030mm	2		
4.5 × 4.5mm			1230mm	2		
5.0 × 4.0mm			1530mm	3		
5.0 × 5.0mm			1830mm	4		
6.0 × 5.0mm			2030mm	4		
6.0 × 6.0mm			2230mm	4		
			2430mm	4		



GF007-1



GF007-2



GF007-3



GF007

## 3D Fence With BD Post

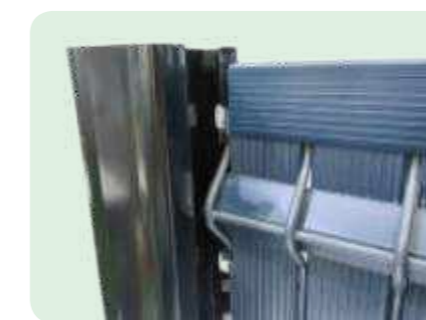


### • Specifications

Post View	Size	Thickness	Panel Height	Base Post	Normal Post	Surface Treatment
	55 x 80mm	1.2mm	830mm	850mm	1200mm	Galvanized tube PVC coated
			1030mm	1050mm	1400mm	
			1230mm	1250mm	1600mm	
			1530mm	1550mm	2000mm	
			1830mm	/	2400mm	
			2030mm	/	2500mm	
			2230mm	/	2800mm	
			2430mm	/	3000mm	



GF008-1



GF008-2



GF008-3



GF008



## 3D Fence With CM Post

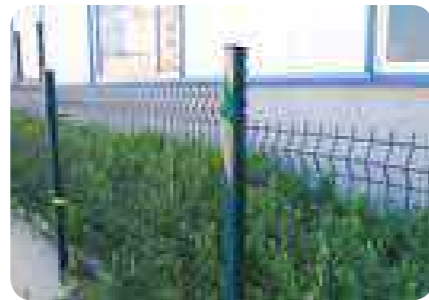


### • Specifications

Line Wire × Cross Wire	Hole Size	Panel Length	Panel Height	Bending No.	Common Color	Surface Treatment
4.0 × 4.0mm	50 × 100mm 50 × 200mm 55 × 200mm 75 × 150mm 100 × 300mm 100 × 300mm 100 × 300mm	2.0m 2.2m 2.4m 2.5m 2.8m 3.0m	830mm	2	Green RAL6005 Grey RAL7016 Brown RAL8019 Black RAL9005 White RAL9010	1. Hot-dipped galvanized after black wire welded 2. PVC coated after galvanized wire welded 3. PE coated after galvanized wire welded
4.5 × 4.0mm			1030mm	2		
4.5 × 4.5mm			1230mm	2		
5.0 × 4.0mm			1530mm	3		
5.0 × 5.0mm			1830mm	4		
6.0 × 5.0mm			2030mm	4		
6.0 × 5.0mm			2230mm	4		
6.0 × 6.0mm			2430mm	4		



GF009-1



GF009-2



GF009-3



GF009



## 3D Fence With I Type Post

### • Specifications

Post View	Size	Thickness	Panel Height	Base Post	Normal Post	Surface Treatment
 CM Post	55 × 65mm 65 × 95mm	1.0mm	830mm	850mm	1200mm	1. Black tube Hot-dipped galvanized 2. Galvanized tube PVC coated
		1.1mm	1030mm	1050mm	1400mm	
		1.2mm	1230mm	1250mm	1600mm	
			1530mm	1550mm	2000mm	
 I Type Post	44 × 70mm 55 × 100mm	1.5mm	1830mm	/	2400mm	
		1.8mm	2030mm	/	2500mm	
		2.0mm	2230mm	/	2800mm	
		2.5mm	2430mm	/	3000mm	



GF010



GF011



GF012



GF013



# Single Gate



• Specifications									
Width	Height	Frame Pipe		Post Size		Mesh Inside		Tube Inside	
		Size	Thickness	Size	Thickness	Wire Dia.	Hole Size	Pipe Size	Distance
0.9m	1.0m	30 × 50mm	1.2mm	50 × 50mm	1.5mm	4mm	50 × 100mm	20 × 20mm	100mm
1.0m	1.2m			60 × 60mm	1.8mm		50 × 200mm		
1.2m	1.5m	40 × 40mm	1.5mm	80 × 80mm	2.0mm	5mm	75 × 150mm	20 × 30mm	120mm
1.5m	1.8m	40 × 60mm	2.0mm	100 × 100mm	2.5mm	6mm	75 × 200mm		140mm
1.8m	2.0m	50 × 50mm			3.0mm		100 × 200mm		
1.8m	2.2m	60 × 80mm							
1.8m	2.4m								
Surface Treatment		1. Hot-dipped galvanized after black wire and tube welded 2. Powder coated after galvanized wire and tube welded							



GF014-1

GF014-2

GF014-3

GF014-4



GF014



# Single Gate



GF015

GF016

GF017



GF018



# Double Gate



• Specifications									
Width	Height	Frame Pipe		Post Size		Mesh Inside		Tube Inside	
		Size	Thickness	Size	Thickness	Wire Dia.	Hole Size	Pipe Size	Distance
2.0m	1.0m	40 × 60mm	1.5mm	60 × 60mm	1.8mm	4mm	50 × 100mm	20 × 20mm	100mm
3.0m	1.2m								
4.0m	1.5m	50 × 50mm	2.0mm	80 × 80mm	2.5mm	5mm	75 × 150mm	20 × 30mm	120mm
6.0m	1.8m	60 × 60mm	2.5mm	100 × 100mm	3.0mm	6mm	75 × 200mm		140mm
8.0m	2.0m	60 × 80mm					100 × 200mm		
8.0m	2.2m								
8.0m	2.4m								
Surface Treatment		1. Hot-dipped galvanized after black wire and tube welded 2. Powder coated after galvanized wire and tube welded							



GF019-1



GF019-2



GF019-3



GF019



# Double Gate



GF020



GF021



# Sliding Gate



## • Specifications

Width	Height	Frame Pipe		Post Size		Mesh Inside		Tube Inside	
		Size	Thickness	Size	Thickness	Wire Dia.	Hole Size	Pipe Size	Distance
4.0m	1.8m	40 × 60mm	1.5mm	60 × 60mm	1.8mm	4mm	50 × 100mm		100mm
4.5m	2.0m	50 × 50mm	2.0mm	80 × 80mm	2.0mm	5mm	50 × 200mm	20 × 20mm	120mm
5.0m	2.2m	60 × 60mm	2.5mm		2.5mm	6mm	75 × 150mm	20 × 30mm	140mm
6.0m	2.4m	60 × 80mm			3.0mm		75 × 200mm		
							100 × 200mm		



GF022-1



GF022-2



GF022-3



GF022



# Sliding Gate

Sliding driveway gate products offer an efficient entry to your residential or light commercial property. Our sliding gate is a whole system design with gate panel, guide post, bottom wheel, support wheel, pathway. If requires for a electrically operated gate, motor, rack, control box and other all necessary accessories also available. It's flowing lines, simple and beautiful and full of rich modern residential sensual, garden Light, villas era of high-grade. Simple installation, easy maintenance, easy to clean, affordable, eliminating maintenance.

Sliding gates are great for applications with space restrictions. Swing gates require 12" to 14" of room for a gate to swing into your property. Sliding gates run on the back side of a fence line which great for properties that have width but not depth. It can be used to Country house, Park, Farm, Villadom, Industry entrance and so on.



GF023-1



GF023-2



GF023-3



GF023



# *Chain Link Fence*





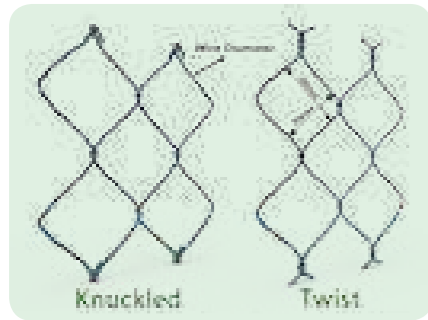
# Chain Link Fence



## • Specifications

Wire Dia.	Material	Hole Size	Roll Height	Roll Length	Edge Woven
2.5mm	Electric galvanized wire	40 × 40mm	1.2m	9m	Knuckled edge Twist edge
3.0mm		50 × 50mm	1.5m	10m	
3.5mm	Hot-dipped galvanized wire	60 × 60mm	1.8m	15m	
4.0mm	Galfan wire	75 × 75mm	2.0m	18m	
4.5mm	PE/PVC coated wire	100 × 100mm	2.4m	20m	
				2.8m	
			3.0m	30m	

Surface Treatment: 1. Hot-dipped galvanized wire woven 2. PE/PVC coated wire woven 3. Stainless wire woven



GF024-1



GF024-2



GF024-3



GF024



# Chain Link Fence



GF025



GF026



GF027



GF028



GF029



GF030



# Chain Link Fence



## Specifications

Post View	Post Size	Rails	Thickness	Mesh Height	Post Length
Round Post 	Φ40	Φ32 Φ40 Φ48	1.5mm	1.2m	1.6m
	Φ48		1.8mm	1.5m	2.0m
	Φ60		2.0mm	1.8m	2.3m
	Φ75		2.5mm	2.0m	2.5m
Angle Iron 	40 × 40mm	40 × 40mm	4.0mm	2.4m	3.0m
	50 × 50mm		5.0mm	2.8m	3.5m
	60 × 60mm	50 × 50mm	6.0mm	3.0m	3.7m
	70 × 70mm				

Surface Treatment: 1. Pre-galvanized tube 2. Galvanized tube powder coated 3. Hot-dipped galvanized



GF031-1



GF031-2



GF031-3



GF031



# Chain Link Fence



GF032



GF033



GF034



GF035



GF036



GF037



*Tubular Fence*





# Steel Tubular Fence



• Specifications							
Panel Length	Panel Height	Rails	Rails Thickness	Rails No.	Picket	Picket Distance	Post Size
1.5m	1200mm	25 × 25mm	1.0mm	2pcs	16 × 16 × 1mm/1.2mm	100mm	50 × 50 × 1.5mm/1.8mm/2mm
1.8m	1500mm		1.2mm		19 × 19 × 1.2mm/1.5mm		
2.0m	1800mm	40 × 40mm	1.5mm	3pcs	Φ 16 × 1.2/1.5mm	125mm	60 × 60 × 1.5mm/1.8mm/2mm
2.4m	2000mm	45 × 45mm	1.8mm	4pcs			
2.5m	2100mm		2.0mm		Φ 19 × 1.2/1.5mm	140mm	75 × 75 × 1.5mm/1.8mm/2mm
3.0m	2400mm	2.5mm					

Surface Treatment: Powder coated after Hot-dipped galvanized tube welded



GF038-1



GF038-2



GF038-3



GF038



# Steel Tubular Fence



GF039



GF040



GF041



GF042



GF043



GF044



# Aluminum Tubular Fence



## • Specifications

Panel Length	Panel Height	Rails	Rails Thickness	Rails No.	Picket	Picket Distance	Post Size
1.5m	1200mm	25 × 25mm	1.0mm	2pcs 3pcs 4pcs	16 × 16 × 1mm/1.2mm	100mm	50 × 50 × 1.5mm/1.8mm/2mm
1.8m	1500mm	25 × 38mm	1.2mm		19 × 19 × 1.2mm/1.5mm	110mm	60 × 60 × 1.5mm/1.8mm/2mm
2.0m	1800mm	38 × 38mm	1.5mm		Φ 16 × 1.2/1.5mm	125mm	75 × 75 × 1.5mm/1.8mm/2mm
2.4m	2000mm	40 × 40mm	1.8mm		Φ 19 × 1.2/1.5mm		
2.5m	2100mm	45 × 45mm	2.0mm				
3.0m	2400mm	45 × 45mm	2.5mm				

Surface Treatment: Powder coated after Hot-dipped galvanized tube welded



GF045-1



GF045-2



GF045-3



GF045



# Aluminum Tubular Fence



GF046



GF047



# *Security Fence*

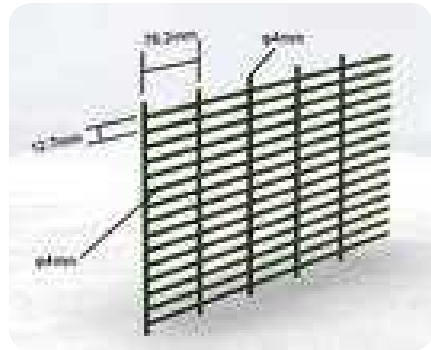




# 358 Fence With I Type Post



• Specifications						
Line Wire × Cross Wire	Hole Size	Panel Length	Panel Height	Bending No.	Common Color	Surface Treatment
4.0 × 3.0mm	76.2 × 12.7mm 75 × 12mm	2.0m 2.2m 2.4m 2.800mm 3.0m	1800mm	4	Green RAL6005 Grey RAL7016 Black RAL9005	1. Hot-dipped galvanized after black wire welded 2. PVC coated after galvanized wire welded 3. PE coated after galvanized wire welded
4.0 × 4.0mm			2000mm	4		
4.5 × 3.0mm			2200mm	4		
4.5 × 4.5mm			2400mm	4		
			2800mm	5		
	3000mm	5				



GF048-1



GF048-2



GF048-3



GF048



# 358 Fence With Square Post

• Specifications					
Post View	Hole Size	Panel Length	Panel Height	Post Length	Surface Treatment
I Type Post 	44 × 70mm 55 × 100mm	1.8mm 2.0mm 2.5mm 3.0mm	1830mm	2400mm	1. Black tube Hot-dipped galvanized 2. Galvanized tube PVC coated
			2030mm	2500mm	
2230mm	2800mm				
2430mm	3000mm				
2800mm	3500mm				
Square Post 	50 × 50mm 60 × 60mm 80 × 80mm 100 × 100mm		3000mm	3700mm	



GF049-1



GF049-2



GF049-3



GF049



# 358 Fence With Flat Bar



## • Specifications

Line Wire × Cross Wire	Hole Size	Panel Length	Panel Height	Bending No.	Common Color	Surface Treatment
4.0 × 3.0mm	76.2 × 12.7mm 75 × 12mm	2.0m 2.2m 2.4m 2.800mm 3.0m	1800mm	4	Green RAL6005 Grey RAL7016 Black RAL9005	1. Hot-dipped galvanized after black wire welded 2. PVC coated after galvanized wire welded 3. PE coated after galvanized wire welded
4.0 × 4.0mm			2000mm	4		
4.5 × 3.0mm			2200mm	4		
4.5 × 4.5mm			2400mm	4		
			2800mm	5		
	3000mm	5				



GF050-1



GF050-2



GF050-3



GF050



# 358 Fence With Buckle Plate

## • Specifications

Post Size	Thickness	Panel Height	Post Length	Flat Bar Thickness	Spike	Surface Treatment
50 × 50mm 60 × 60mm 80 × 80mm 100 × 100mm	1.8mm 2.0mm 2.5mm 3.0mm	1830mm	2400mm	4.0mm 4.5mm 5.0mm 6.0mm 7.0mm	Big type Middle type Small type	1. Black tube Hot-dipped galvanized 2. Galvanized tube PVC coated
		2030mm	2500mm			
		2230mm	2800mm			
		2430mm	3000mm			
		2800mm	3500mm			
		3000mm	3700mm			



GF051-1



GF051-2



GF051-3



GF051



# 358 Fence With H Type Post



• Specifications					
Horizontal Wire Dia.	Hole Size	Panel Length	Panel Height	Common Color	Surface Treatment
4mm x 3mm	76.2 x 12.7mm 75 x 12mm	2.0m 2.2m 2.4m	1800mm	Green RAL6005 Grey RAL7016 Black RAL9005	1. Hot-dipped galvanized after black wire welded 2. PVC coated after galvanized wire welded 3. PE coated after galvanized wire welded
4mm x 4mm			2000mm		
4.5mm x 4mm			2200mm		
4.5mm x 4.5mm			2400mm		
			2800mm		
			3000mm		



GF052-1



GF052-2



GF052-3



GF052

# 358 Fence With H Type Post



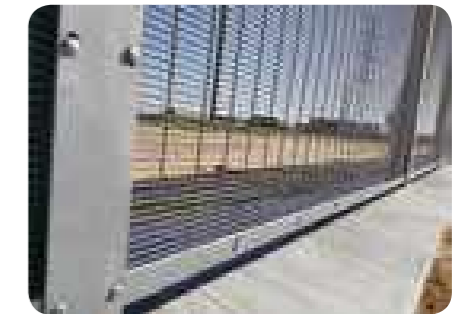
• Specifications				
Panel Height	Post Length	Post Size	Common Color	Surface Treatment
1800mm	2400mm	100 x 55 x 5mm 150 x 150 x 5mm	Green RAL6005 Grey RAL7016 Black RAL9005	1. Black tube Hot-dipped galvanized 2. Galvanized tube PVC coated
2000mm	2600mm			
2200mm	2800mm			
2400mm	3000mm			
2800mm	3500mm			
3000mm	3700mm			



GF053-1



GF053-2



GF053-3



GF053



# *Temporary Fence*





# Australia Temporary Fence



## • Specifications

Horizontal Wire Dia.	Vertical Wire Dia.	Welded Mesh Hole Size	Chain Link Mesh Hole Size	Panel Length	Panel Height	Frame Tube
3mm	3mm	60 × 60mm	50 × 50mm	2.2m 2.3m 2.4m	1.8m 2.1m	Φ32 × 1.4mm
4mm	3mm	50 × 100mm	60 × 60mm			Φ32 × 1.8mm
		65 × 150mm	75 × 75mm			Φ32 × 2.0mm
4mm	4mm	75 × 150mm	100 × 100mm	Φ48 × 1.8mm		
		100 × 200mm		Φ48 × 2.0mm		

Surface Treatment: 1. Hot-dipped galvanized wire and tube welded 2. PVC coated after galvanized wire and tube welded



GF054-1



GF054-2



GF054-3



GF054-4



GF054



# Australia Temporary Fence



GF055



GF056



# Australia Temporary Fence



GF057



# Australia Temporary Fence



GF059



GF060



GF058



GF061



# Temporary Fence Gate



GF062



GF063

# Temporary Fence Gate



GF064-1



GF064-2



GF064-3



GF064-4



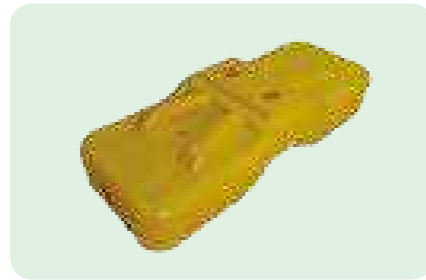
GF064



# Plastic Feet



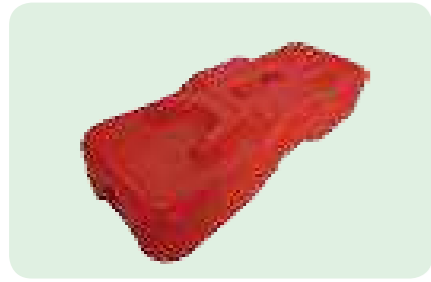
GF065



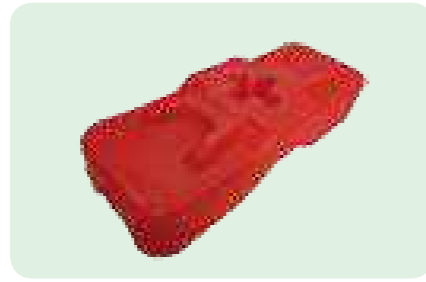
GF066



GF067



GF068



GF069



GF070



GF071



GF072



GF073



GF074



GF075



# American Temporary Fence

## • Specifications

Wire Dia.	Chain Link Mesh Hole Size	Panel Length	Panel Height	Frame Tube
3.0mm	50 × 50mm	2.4m	1.8m 2.0m	Φ32 × 2.0mm Φ48 × 1.5mm Φ48 × 1.8mm Φ48 × 2.0mm
3.5mm	60 × 60mm	3.0m		
4.0mm	65 × 65mm 75 × 75mm	3.6m		

Surface Treatment: Hot-dipped galvanized wire and tube welded



GF076-1



GF076-2



GF076-3



GF076



# Canada Temporary Fence



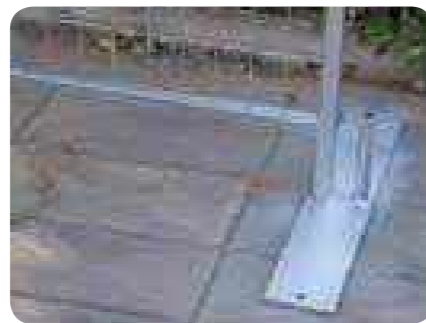
## • Specifications

Wire Dia.	Welded Mesh Hole Size	Panel Length	Panel Height	Frame Tube	Inner Tube
3.0mm x 3.0mm	60 x 60mm	2.4m	1.8m	25 x 25 x 1.0mm	20 x 20 x 1.0mm
3.5mm x 3.5mm	50 x 100mm			25 x 25 x 1.2mm	
4.0mm x 3.0mm	50 x 150mm	2.8m	2.0m	25 x 25 x 1.5mm	20 x 20 x 1.2mm
4.0mm x 3.0mm	75 x 150mm	3m	2.1m	25 x 25 x 1.8mm	20 x 20 x 1.5mm
4.0mm x 4.0mm	50 x 200mm	3.6m		25 x 25 x 2.0mm	
	100 x 200mm				

Surface Treatment: 1.Hot-dipped galvanized wire and tube welded 2.PVC coated after galvanized wire and tube welded 3.Hot-dipped galvanized after black wire and tube welded



GF077-1



GF077-2



GF077-3



GF077

# Canada Temporary Fence



GF078-1



GF078-2



GF078



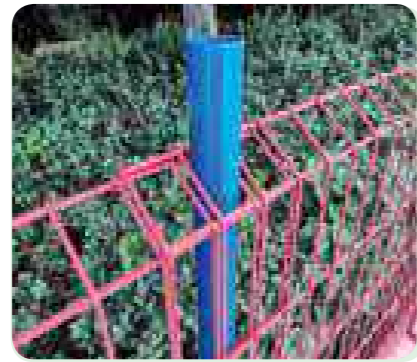
# Edge Protection Fence



• Specifications					
Wire Diameter	Mesh Size	Length	Height	Round Post	Square Post
5mm × 4mm	75 × 75mm	1.5m	1.3m		
6mm × 5mm	50 × 100mm	2.0m	1.4m	48 × 2mm	50 × 50 × 2mm
8mm × 6mm	50 × 200mm	2.5m	1.5m	60 × 2mm	60 × 60 × 2mm
		3.0m	1.6m		



GF079-1



GF079-2



GF079-3



GF079

# Edge Protection Fence



• Specifications					
Wire Diameter	Mesh Size	Length	Height	Bending Degree	Round Post
5mm × 4mm	75 × 75mm	1.5m	1.2m	60°	48 × 2mm
6mm × 5mm	50 × 100mm	2.0m	1.3m	90°	60 × 2mm
8mm × 6mm	50 × 200mm	2.5m	1.4m	12°	
	75 × 150mm	3.0m	1.5m		



GF080-1



GF080-2



GF080-3



GF080



# *Crowd Control Barrier*





# American Crowd Control Barrier



## • Specifications

Panel Length	Panel Height	Frame Tube	Inner Tube	Inner Tube Distance	Feet
6.5'	36"				Flat feet: 50 × 580 × 6mm
7.0'	40"	Φ38 × 1.5mm	Φ12 × 1.2mm	110mm	Bridge feet: 67.5 × 50cm
7.5'	47"	Φ38 × 1.8mm	Φ12 × 1.5mm	120mm	Length × Width:
8.0'	60"	Φ38 × 2.0mm	Φ16 × 1.5mm	150mm	67.5 × 50cm
8.5'					V shape feet height: 270mm

Surface Treatment: 1. Hot-dipped galvanized wire and tube welded 2. PVC coated after galvanized wire and tube welded 3. Hot-dipped galvanized after black wire and tube welded



GF081-1



GF081-2



GF081-3



GF081

# American Crowd Control Barrier



GF082-1



GF082-2



GF082-3



GF082-4



GF082



# European Crowd Control Barrier



## • Specifications

Panel Length	Panel Height	Frame Tube	Inner Tube	Inner Tube Distance	Feet
2.0m	900mm	Φ38 × 1.5mm	Φ16 × 1.2mm	110mm	Flat feet: 50 × 580 × 6mm
2.2m	1000mm	Φ38 × 1.8mm	Φ16 × 1.5mm	120mm	Bridge feet: 67.5 × 50cm
2.5m	1100mm	Φ38 × 2.0mm	Steel rod:	150mm	V shape feet height: 270mm
	1200mm	Φ48 × 1.5mm Φ48 × 2.0mm	Φ12mm		

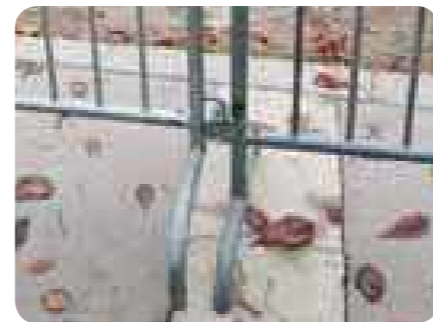
Surface Treatment: 1. Hot-dipped galvanized wire and tube welded  
2. Hot-dipped galvanized after black wire and tube welded



GF083-1



GF083-2



GF083-3



GF083



# European Crowd Control Barrier



GF084



GF085



GF086



# Australia Crowd Control Barrier



• Specifications					
Panel Length	Panel Height	Frame Tube	Inner Tube	Inner Tube Distance	Feet
1050mm	900mm	Φ25 × 1.0mm	Φ20 × 1.0mm	110mm	Flat feet: 50 × 580 × 6 mm Bridge feet: 67.5 × 50cm Length × Width: 67.5 × 50cm
2000mm	1000mm	Φ25 × 1.2mm	Φ20 × 1.2mm	120mm	
2100mm	1100mm	Φ25 × 1.6mm	Φ20 × 1.2mm	150mm	
2300mm	1500mm	Φ25 × 1.6mm	Φ20 × 1.5mm	150mm	
2500mm	1500mm	Φ25 × 2.0mm	Φ20 × 1.5mm	196mm	

Surface Treatment: 1. Hot-dipped galvanized wire and tube welded 2. PVC coated after galvanized wire and tube welded 3. Hot-dipped galvanized after black wire and tube welded



GF087-1



GF087-2



GF087-3



GF087

# Australia Crowd Control Barrier



GF088



GF089



# Welded Gabion Box



• Specifications						
Mesh Wire Dia.	Spring Wire Dia.	Hole Size	Box Length	Diaphragm	Box Width	Box Height
3.0mm		30 × 50mm	1.0m	No		
3.5mm		30 × 100mm	1.5m	No		0.3m
4.0mm	4.0mm	50 × 100mm	2.0m	1	0.5m	0.5m
4.5mm	4.5mm	75 × 75mm	3.0m	2	1.0m	1.0m
5.0mm		75 × 150mm	4.0m	3	1.5m	1.5m
6.0mm		75 × 150mm	5.0m	4		
Surface Treatment	1. PE coated after Galvanized wire welded    2. Glafan wire welded 3. Hot-dipped galvanized after black wire welded					



GF090-1



GF090-2



GF090-3

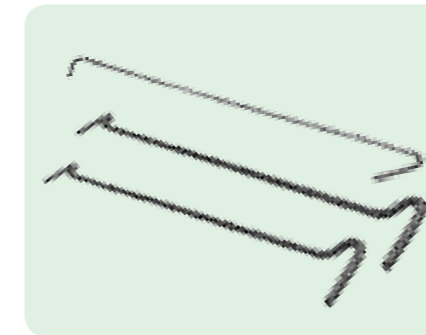


GF090

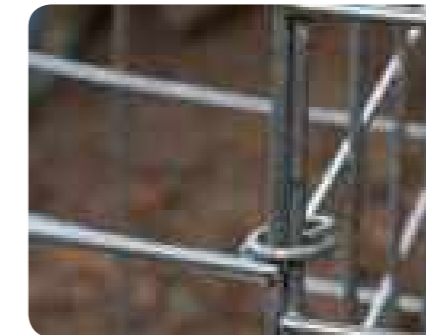
# Gabion Wall



• Specifications							
Mesh Wire Dia.	Link Mode	Hole Size	Wall Length	Wall Width	Wall Height	H/U Shape Post	Post Thickness
		30 × 50mm			0.5m		
4.0mm	Springs	30 × 100mm	1.0m	0.1m	1.0m	100 × 50mm 120 × 74mm	3mm
4.5mm	C nail	50 × 100mm	1.5m	0.2m	1.5m		4mm
5.0mm	Metal clips	75 × 75mm	2.0m	0.3m	1.8m		5mm
		75 × 150mm	2.5m		2.0m		6mm
Surface Treatment	1. PE coated after galvanized wire welded    2. Glafan wire welded 3. Hot-dipped galvanized after black wire welded						



GF091-1



GF091-2



GF091-3



GF091



# Blast Wall



## • Specifications

Wire Diameter	Spring Wire	Mesh Size
4.0mm	4.0mm	76 × 76mm
4.5mm		50 × 100mm
5.0mm	4.5mm	100 × 100mm

Surface Treatment:  
 1. Galvanized wire welded  
 2. Galvan wire welded  
 3. Hot-dipped galvanized after welded



GF092

## • Specifications

Unit	Height	Width	Length
Mil 12B Mil 12G	7' (2.13m)	5' (1.52m)	95' (28.94m)
Mil 11B Mil 11G	3' 3" (1.0m)	2' 6" (0.76m)	30' (9.14m)
Mil 10B Mil 10G	4' 6" (1.37m)	2' (0.61m)	32' (10m)
Mil 9B Mil 9G	7' 3" (2.21m)	7' (2.13m)	90' (27.74m)
Mil 8B Mil 8G	5' 6" (1.68m)	2' (0.61m)	10' (3.05m)
Mil 7B Mil 7G	2' (0.61m)	2' (0.61m)	10' (3.05m)
Mil 6B Mil 6G	2' (0.61m)	5' (1.52m)	32' (10m)
Mil 5B Mil 5G	3' 3" (1.0m)	3' 3" (1.0m)	32' (10m)
Mil 4B Mil 4G	2' (0.61m)	2' (0.61m)	4' (1.21m)
Mil 3B Mil 3G	2' (0.61m)	2' (0.61m)	10' (3.05m)
Mil 2B Mil 2G	4' 6" (1.37m)	3' 6" (1.06m)	32' (10m)
Mil 1B Mil 1G	7' (2.13m)	3' 6" (1.06m)	18' (5.5m)



GF093



# Blast Wall



GF094



GF095



GF096



GF097



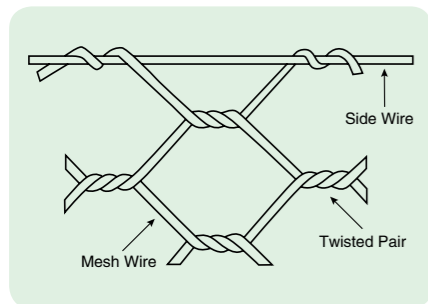
GF098



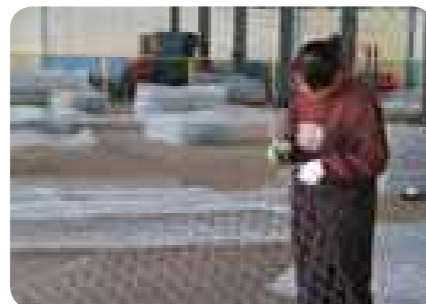
## • Specifications

Materials	Mesh Wire	Selvage Wire	Tie Wire	Mesh Size	Length	Diaphragm	Width	Height
Galvanized wire	1.8mm	2.4mm	2.0mm	60 × 80mm	1.0m	No	0.5m	0.3m
	2.0mm	2.7mm			2.0m	1		
Galfan wire	2.2mm	3.0mm	2.2mm	80 × 100mm	3.0m	2	1.5m	0.5m
	2.4mm	3.4mm			4.0m	3		
PE/PVC coated wire	2.7mm	4.0mm	2.4mm	100 × 120mm	5.0m	4	2.0m	1.0m
	3.0mm	4.0mm			6.0m	5		

Extra Tie Wire: 2% Weight of gabion box



GF099-1



GF099-2



GF099-3



GF099



GF100



GF101



GF102



GF103



GF104



GF105



# Palisade Fence



• Specifications						
Pale Section	Thickness of Pale	Standard Pale Pcs	Standard Fence Width	Height	Angle Rail	Surface Treatment
"D" Section	2.0mm	17 Pales	2.75m	1800mm	40 × 40 × 4mm 45 × 45 × 5mm 50 × 50 × 5mm	1. Hot-dipped galvanized 2. Powder coated
	2.5mm			2000mm		
	3.0mm			2100mm		
"W" Section	2.5mm			2400mm		
	3.0mm			3000mm		
	3.5mm					



GF106-1



GF106-2



GF106-3



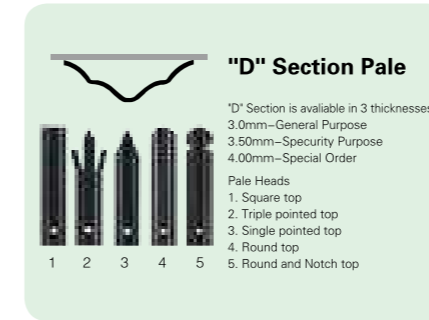
GF106



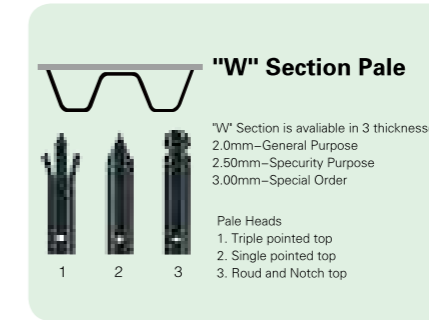
# Palisade Fence

• Specifications					
Post View	Post Size	Thickness	Panel Height	Post Height	Link Mode
H Post	55 × 100mm 74 × 120mm	5.0mm	1800mm 2000mm 2100mm	2400mm	
		6.0mm		2600mm	
		8.0mm		2700mm	
Square Post	60 × 60mm 80 × 80mm 100 × 100mm	2.0mm	2400mm 3000mm	3000mm	
		2.5mm		4000mm	
		3.0mm			
		3.5mm			

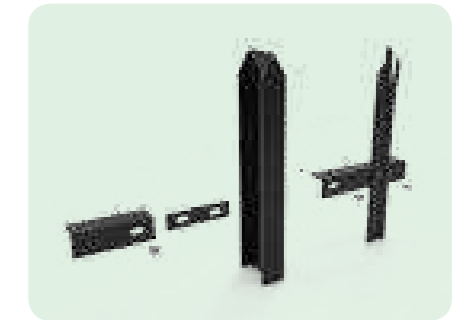
Surface Treatment: 1.Hot-dipped galvanized 2.Powder coated



GF107-1



GF107-2



GF107-3



GF107



# Airport Fence



## • Specifications

Line Wire × Cross Wire	Hole Size	Panel Length	Panel Height	Bending No.	Common Color	Surface Treatment
4.5 × 4.5mm	50 × 100mm	2.0m	1830mm	4	Green RAL6005	1. Hot-dipped galvanized after black wire welded 2. PVC coated after galvanized wire welded 3. PE coated after galvanized wire welded
5.0 × 4.0mm	50 × 200mm	2.2m	2030mm	4	Grey RAL7016	
5.0 × 5.0mm	55 × 200mm	2.5m	2230mm	4	Black RAL9005	
6.0 × 5.0mm	75 × 150mm	2.8m	2430mm	4	White RAL9010	
	100 × 300mm	3.0m				



GF108-1



GF108-2



GF108-3



GF108



# Airport Fence

## • Specifications

Post View	Size	Thickness	Panel Height	Post Length	Arm Length	Surface Treatment
	50 × 50mm 60 × 60mm 80 × 80mm	1.5mm	1830mm	2400mm	350mm	1. Black tube Hot-dipped galvanized 2. Galvanized tube PVC coated
		1.8mm	2030mm	2500mm	450mm	
		2.0mm	2230mm	2800mm	500mm	
		2.5mm	2430mm	3000mm	550mm	
		3.0mm				



GF109-1



GF109-2



GF109-3



GF109



# Decofor Panel Fence



• Specifications				
Wire Dia.	Hole Size	Length	Height	No. of Fittings
5/4/5mm 6/5/6mm 8/6/8mm	50 × 200mm 75 × 150mm 100 × 200mm	2000mm 2200mm 2500mm 3000mm	1500mm	3
			1800mm	4
			2000mm	4
			2200mm	5
			2400mm	5
			2800mm	6
Surface Treatment		1. Hot dipped galvanized after black wire welded 2. Powder coated after galvanized wire welded 3. Powder coated after Black wire welded		



GF110-1



GF110-2



GF110-3



GF110

# Double Horizontal Wire Fence



• Specifications					
Post View	Size	Thickness	Panel Height	Post Length	Surface Treatment
Square Post 	40 × 40mm	1.0mm	1500mm 1800mm 2000mm 2200mm 2400mm 2800mm	2000mm 2400mm 2500mm 2800mm 3000mm 3400mm	1. Black tube Hot-dipped galvanized 2. Galvanized tube PVC coated
	50 × 50mm	1.1mm			
	60 × 60mm	1.2mm			
Rectangle Post 	30 × 50mm	1.5mm			
	40 × 60mm	1.8mm			
	60 × 80mm	2.0mm			
Peach Post 	50 × 70mm	2.5mm			
	70 × 100mm	1.0mm			
		1.1mm			
		1.2mm			



GF111-1



GF1112



GF111-3



GF111



# Double Circle Fence



• Specifications						
Wire Dia.	Hole Size	Panel Length	Panel Height	Bending No.	Common Color	Surface Treatment
4.0mm 4.5mm 5.0mm 6.0mm	50 × 100mm 50 × 200mm 55 × 200mm 75 × 150mm	2.0m 2.2m 2.4m 2.5m	830mm	2	Green RAL6005 Grey RAL7016 Brown RAL8019 Black RAL9005 White RAL9010	1.Hot-dipped galvanized after black wire welded 2.PVC coated after galvanized wire welded
			1030mm	2		
			1230mm	2		
			1530mm	3		
			1830mm	4		
			2030mm	4		



GF112-1



GF112-2



GF112-3



GF112



# Double Circle Fence

• Specifications						
Post View	Size	Thickness	Panel Height	Base Post	Normal Post	Surface Treatment
Square Post 	40 × 40mm	1.2mm 1.5mm 1.8mm 2.0mm 2.5mm	830mm	850mm	1200mm	1.Black tube Hot-dipped galvanized 2.Galvanized tube PVC coated
	50 × 50mm		1030mm	1050mm	1400mm	
	60 × 60mm		1230mm	1250mm	1600mm	
	Round Post 		Φ48mm	1530mm	1550mm	
Φ60mm	1830mm	/	2400mm			
Φ75mm	2030mm	/	2500mm			



GF113-1



GF113-2



GF113-3



GF113



# Roll Top Fence



## • Specifications

Wire Dia.	Mesh Size	Panel Length	Panel Height	Common Color	Surface Treatment
4.0 × 4.0mm 4.5 × 4.0mm 4.5 × 4.5mm 5.0 × 4.0mm 5.0 × 5.0mm	50 × 100mm 50 × 200mm 55 × 200mm 75 × 150mm 100 × 300mm	2.0m 2.2m 2.4m 2.5m 2.8m	830mm	Green RAL6005 Grey RAL7016 Brown RAL8019 Black RAL9005 White RAL9010	1. Hot-dipped galvanized after black wire welded 2. PVC coated after galvanized wire welded 3. PE coated after galvanized wire welded
			1030mm		
			1230mm		
			1530mm		
			1830mm		
			2030mm		



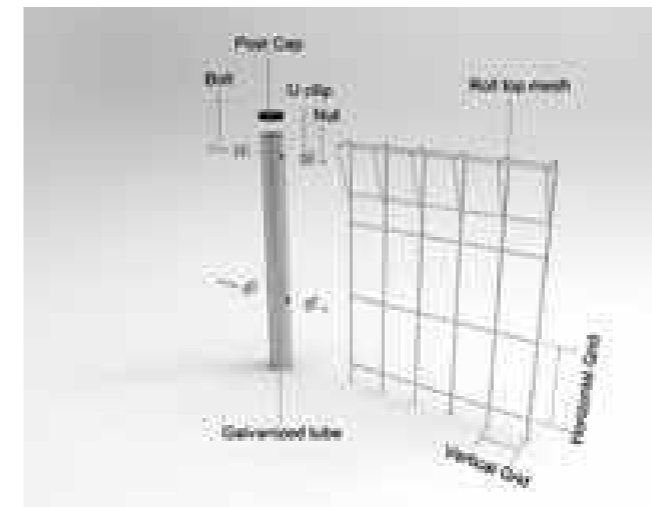
GF114



# Roll Top Fence

## • Specifications

Post View	Size	Thickness	Panel Height	Base Post	Normal Post	Surface Treatment
Square Post 	40 × 40mm 50 × 50mm 60 × 60mm	1.5mm 1.8mm 2.0mm 2.5mm	830mm	850mm	1200mm	1. Black tube Hot-dipped galvanized 2. Galvanized tube PVC coated
			1030mm	1050mm	1400mm	
			1230mm	1250mm	1600mm	
Round Post 	Φ48mm Φ60mm Φ75mm		1530mm	1550mm	2000mm	
			1830mm	/	2400mm	
			2030mm	/	2500mm	



GF115



GF116



GF117



GF118



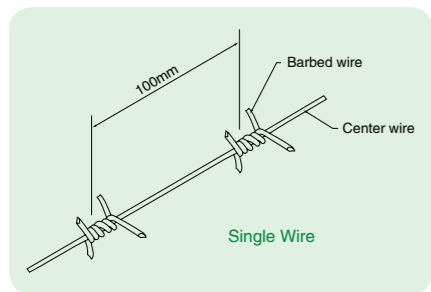
# Barbed Wire



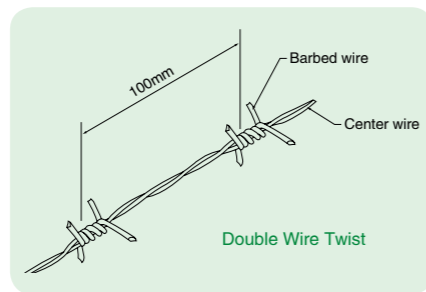
## • Specifications

Type	Wire Gauge (SWG)		Barb Distance	Barb Length
Electric galvanized barbed wire, Hot-dip zinc plating barbed wire	10# × 12#		7.5–15cm	1.5–3cm
	12# × 12#			
	12# × 14#			
	14# × 14#			
	14# × 16#			
	16# × 16#			
PVC coated barbed wire, PE barbed wire	Before coating	After coating	7.5–15cm	1.5–3cm
	1.0mm–3.5mm	1.4mm–4.0mm		
	BWG11#–20#	BWG8#–17#		
	SWG11#–20#	SWG8#–17#		

PVC/PE Coating Thickness: 0.4mm–0.6mm; different colors or length are available at customers' request.



GF119-1



GF119-2



GF119-3



GF119

# Spike



## • Specifications

Model	Large	Medium	Small
Material	Q235 Plate	Q235 Plate, SS304	Q235 Plate, SS304
Length	1.25m	1.25m	1.25m
Thickness	2.0mm	2.0mm	1.0mm
Barb Length	115mm	95mm	65mm
Barb Spacing	80mm	130mm	75mm
Bottom Width	50mm	45mm	22mm
Weight	1.8kg	0.8kg	0.28kg
Surface	1. Hot dipped galvanized 2. Powder coated	1. Hot dipped galvanized 2. Powder coated	1. Hot dipped galvanized 2. Powder coated



GF120



GF121



GF122



GF123



# Razor Barbed Wire

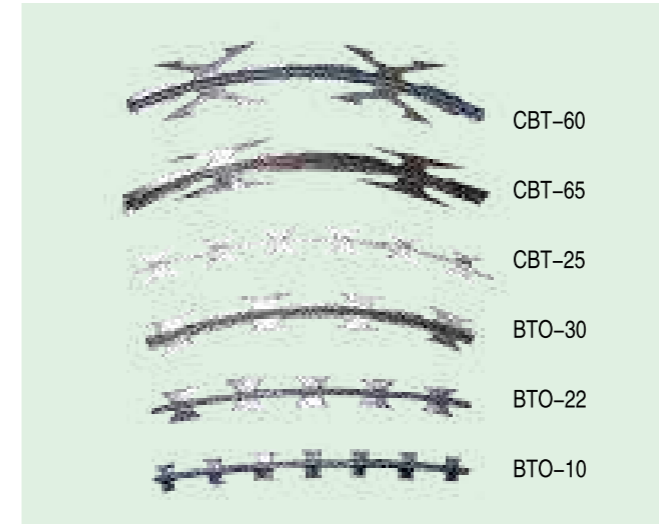


• Specifications

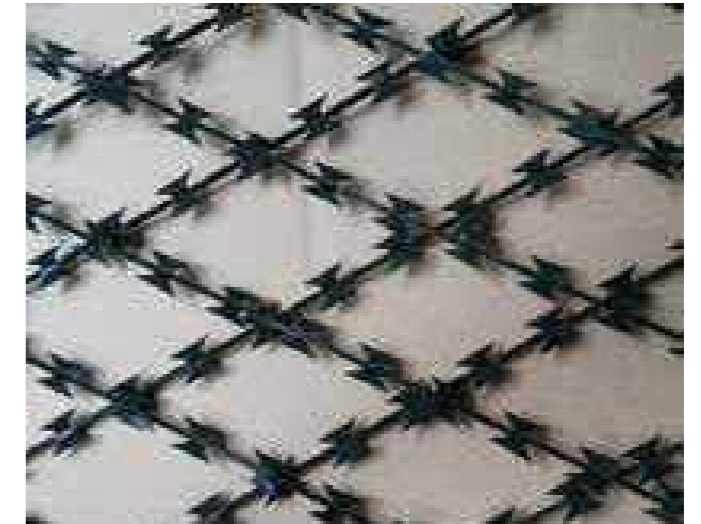
Reference Number	Blade Style	Thickness mm	Wire Dia. mm	Barb Length mm	Barb Width mm	Barb Spacing mm
BTO-10		0.5 ± 0.05	2.5 ± 0.1	10 ± 1	13 ± 1	26 ± 1
BTO-12		0.5 ± 0.05	2.5 ± 0.1	12 ± 1	13 ± 1	26 ± 1
BTO-18		0.5 ± 0.05	2.5 ± 0.1	18 ± 1	15 ± 1	33 ± 1
BTO-22		0.5 ± 0.05	2.5 ± 0.1	22 ± 1	15 ± 1	37 ± 1
BTO-28		0.5 ± 0.05	2.5 ± 0.1	28 ± 1	15 ± 1	45 ± 1
BTO-30		0.5 ± 0.05	2.5 ± 0.1	30 ± 1	18 ± 1	42 ± 1
CBT-60		0.5 ± 0.05	2.5 ± 0.1	60 ± 2	32 ± 1	100 ± 2
CBT-65		0.5 ± 0.05	2.5 ± 0.1	65 ± 2	21 ± 1	100 ± 2



# Razor Barbed Wire



GF125



GF126



GF124



GF127



GF128



GF129



GF130

# Hinge Joint Fence



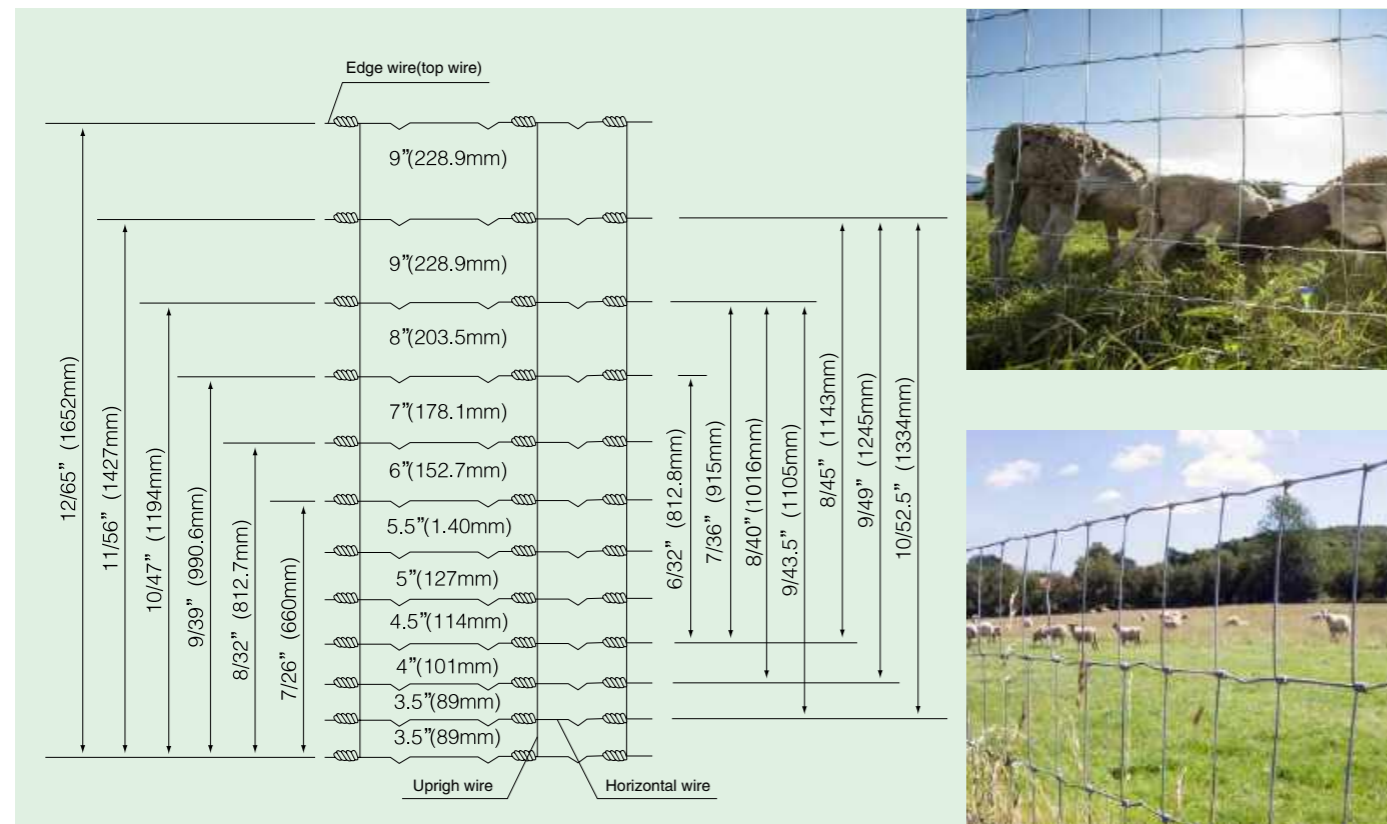
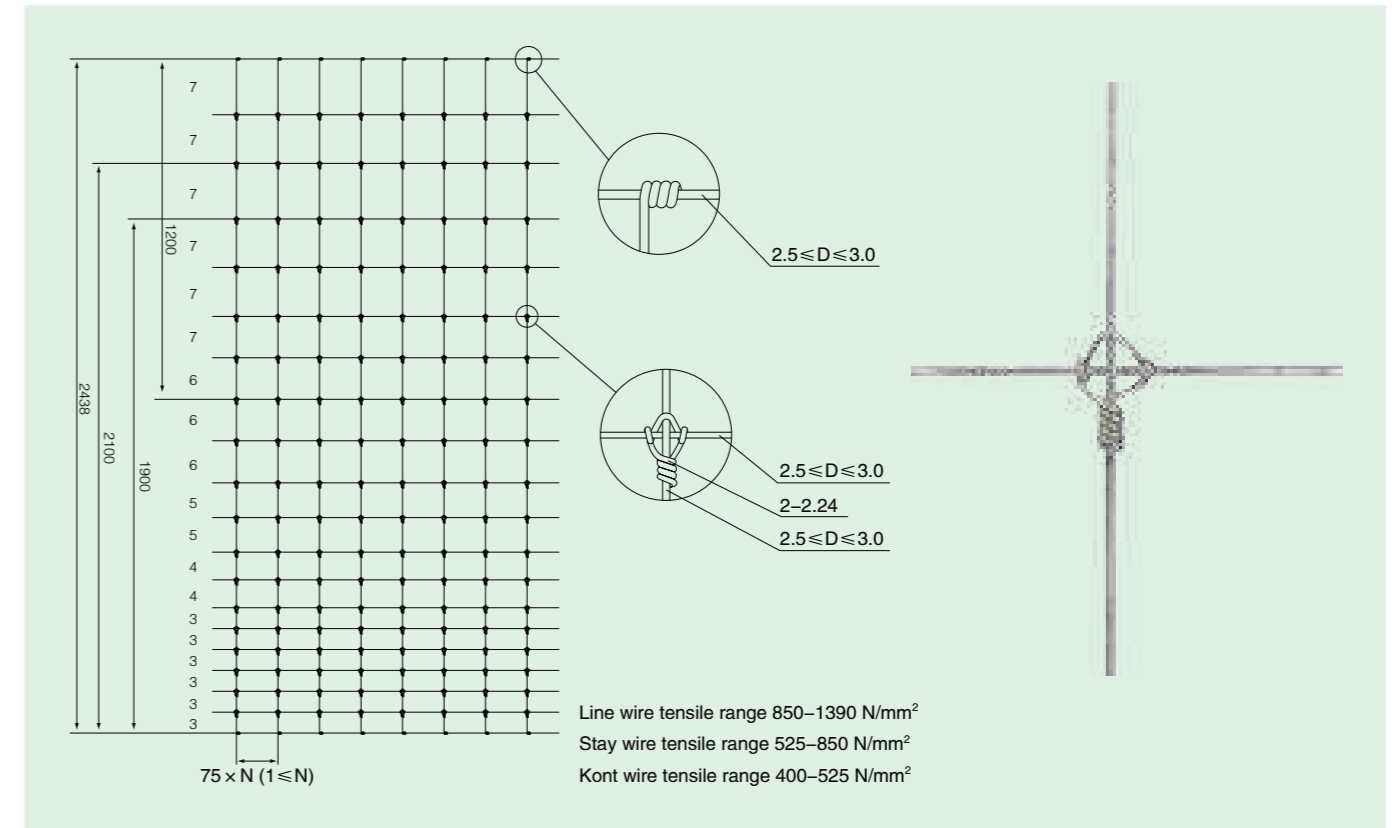
## Specifications

Num	Specifications and Hole Sizes		Gross Weight kg	Top and Bottom Wire Dia. mm	Inner Wire Dia. mm	Roll Dia. mm
	Type	Specifications (The incremental vertical hole sizes)				
1	7/150/813/50	102+114+127+140+152+178	19.3	2.5	2.0	270
2	8/150/813/50	89 (75)+89+102+114+127+140+152	20.8	2.5	2.0	270
3	8/150/902/50	89+102+114+127+140+152+178	21.6	2.5	2.0	270
4	8/150/1016/50	102+114+127+140+152+178+203	22.6	2.5	2.0	270
5	8/150/1143/50	114+127+140+152+178+203+229	23.6	2.5	2.0	270
6	9/150/991/50	89 (75)+89+102+114+127+140+152+178	23.9	2.5	2.0	270
7	9/150/1245/50	102+114+127+140+152+178+203+229	26.0	2.5	2.0	270
8	10/150/1194/50	89 (75)+89+102+114+127+140+152+178+203	27.3	2.5	2.0	270
9	10/150/1334/50	89+102+114+127+140+152+178+203+229	28.4	2.5	2.0	270
10	11/150/1422/50	89 (75)+89+102+114+127+140+152+178+203+229	30.8	2.5	2.0	270

Note: The first data in type is the No. of line wire; The second data is horizontal hole size (mm);  
The third data is the height of the fence (mm); The fourth data is the total length of each roll (m).



# Fixed Knot Fence



GF 131



GF132



# Cattle Panel

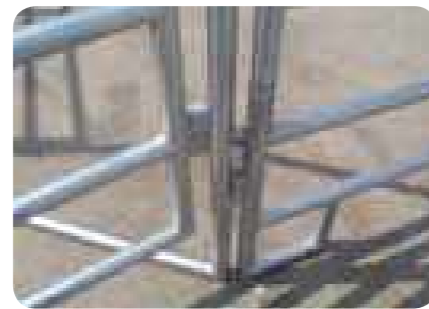


## • Specifications

Panel Length	2.1m, 2.2m, 2.5m, 2.9m, 3.0m, 3.2m, 4.0m
Panel Height	1.6m, 1.7m, 1.8m
Rails Number	4, 5, 6
Link Mode	Lugs and pin
Surface Treatment	1.Pre-galvanized tube welded 2.Hot-dipped galvanized after black tube welded



GF133-1



GF133-2



GF133-3



GF133



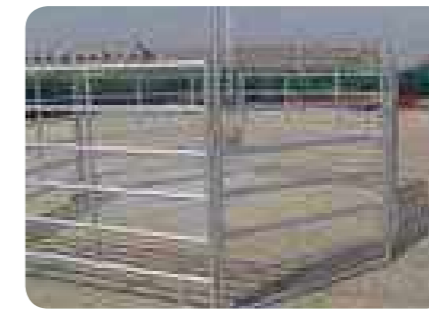
# Cattle Panel

## • Specifications

Vertical Tube		Thickness	Rails		Thickness
Square Pipe	40 × 40mm	1.6mm 1.8mm 2.0mm	Square Pipe	40 × 40mm, 50 × 50mm, 60 × 60mm	1.6mm 1.8mm 2.0mm
	50 × 50mm				
	60 × 60mm				
Round Pipe	32mm	1.6mm 1.8mm 2.0mm	Oval Pipe	30 × 60mm, 40 × 80mm, 42 × 115mm	1.6mm 1.8mm 2.0mm
	40mm		Round Pipe	32mm, 40mm, 48mm	
	48mm				



GF134-1



GF134-2



GF134-3



GF134

# T Shape Post



## "T" Shape Post

Item	Specifications	Length
T30	30 × 30 × 3.0mm	According to customer's requirement
T35	35 × 35 × 3.5mm	
T40	40 × 40 × 4.0mm	
T50	50 × 50 × 5.0mm	
T60	60 × 60 × 6.0mm	
T65	65 × 65 × 6.5mm	
T70	70 × 70 × 7.0mm	
T80	80 × 80 × 8.0mm	



GF135

## Studded Post

Specifications	Length	Surface Treatment
0.95 lb/ft 1.25 lb/ft 1.33 lb/ft With plate	5'-8'	Hot dipped galvanized or paint green normal

This kind of special designed post can be installed with the panels without Clamps and Bolts, with easier installation and wider application.



GF136



GF137



GF138



# Y Shape Post

Items	Standard Specifications	Height	Surface Treatment
"Y" shape post	30 × 30 × 3.0mm 35 × 35 × 3.5mm	1000mm, 1200mm 1500mm, 1750mm 2000mm, 2200mm 2400mm	Galvanized and paint coated Common colors: Black
	1.32kg/m, 1.46kg/m 1.83kg/m, 1.98kg/m 2.05kg/m, 2.45kg/m	1000mm, 1200mm 1500mm, 1750mm 2000mm, 2200mm 2400mm	Galvanized and paint coated Common colors: Black



GF139



GF140



# Farm Gate



## Specifications

Type	Surface Treatment	Hole Size mm	Wire Dia. mm	Brace	Frame Pipe mm	Height mm	Width mm
Wire Filled Farm Gate	Hot dip galvanized, paint	200 × 100	4.0	1 Brace	25 × 2.0	900-1800	1160 (4')
		200 × 110					1460 (5')
		250 × 100					1770 (6')
Pipe Filled Farm Gate		5, 6, 7	32mm OD				2070 (7')
		Horizontal Pipe	42mm OD				2380 (8')
			N Type				32 × 2.0
Chain Link Mesh Farm Gate		I Type	48 × 2.0				3580 (12')
	50 × 50		2.0	4180 (14')			
	75 × 75		2.5	4780 (16')			
			3.0				



GF141-1



GF141-2



GF141-3



GF141



# Metal Wire

## Galvanized Iron Wire

Items	Electro Galvanized Iron Wire	Hot-Dipped Galvanized Iron Wire
Specification	0.2mm-4.0mm	0.55mm-5.0mm
Zinc Coating	7g-18g/m <sup>2</sup>	40g-350g/m <sup>2</sup>
Tensile Strength	30kg-70kg/mm <sup>2</sup>	
Elongation Rate	10%-25%	
Weight / Coil	0.1kg-800kg/coil	
Packing	Plastic film inside and PVC weaving bag outside. Plastic film inside and hessian cloth outside.	



GF142

## Annealed Iron Wire

Material	Black Annealed Iron Wire, Soft Light Annealed Iron Wire
The Standard Size	BWG 5-BWG 36
T/S	30-55kg/mm <sup>2</sup>
Packing	1-500kg/coil, PVC film inside, plastic bag or hessian cloth outside.



GF143

## PVC Coated Wire

Material	PVC Coated Wire
PVC Coating	The lowest coating 0.3mm
T/S	30-55kg/mm <sup>2</sup>
Color	Green, blue, yellow, orange, gray, etc.
Packing	PVC film inside, plastic bag or hessian cloth outside.



GF144

## U Tie Wire

Wire Dia. mm	Length mm	Type	Shape	Packing
2.0-5.0	250-3000	Black U tie wire	Normal shape	According to customer's request
0.7-1.2	250-750	Galvanized U tie wire	Special shape	



GF145

## Straight Cut Iron Wire

Wire Dia. mm	Specifications cm
0.7-1.6	20-60
1.6-4.0	60-600



GF146

## Loop Tie Wire

Wire Dia. mm	Specifications
1.0-2.0	4'-12'
Material	Black annealed iron wire Galvanized iron wire PVC coated iron wire



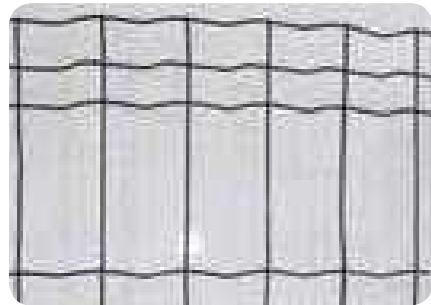
GF147

# Euro Fence



## • Specifications

Wire Dia.	Mesh Size	Height	Length	Surface Treatment	Post Type
2.0mm	50 × 50mm 50 × 100mm	1000mm	20m 25m 30m	1. Electric galvanized then powder coated 2. Hot dip galvanized then powder coated	Dutch Post Round Post
2.5mm		1200mm			
3.0mm		1500mm			
		1800mm 2000mm			



GF148-1



GF148-2



GF148-3



GF148



# Welded Fence Panel

## • Specifications

Wire Dia.	3mm, 4mm, 5mm, 6mm	7mm, 8mm, 9mm, 10mm, 11mm, 12mm
Hole Size	25 × 25mm, 50 × 50mm, 50 × 100mm, 75 × 75mm 75 × 150mm, 100 × 100mm, 100 × 200mm	100 × 100mm, 150 × 150mm 200 × 200mm, 100 × 300mm
Length	1.5m, 2m, 2.5m, 2.8m, 3m, 3.6m, 4m, 5m, 5.8m	
Width	1m, 1.2m, 1.5m, 1.8m, 2m, 2.2m, 2.4m	
Surface Treatment	1. Black wire welded 2. Galvanized/Galfan wire welded 3. Hot-dipped galvanized after black wire welded	



GF149-1



GF149-2



GF149-3



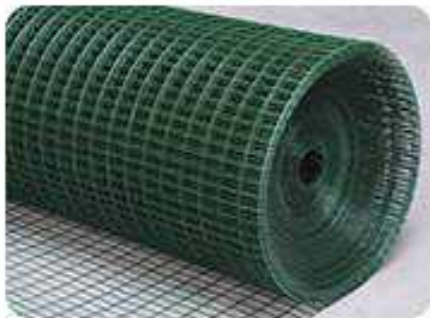
GF149



# Welded Fence Roll



Specifications		
Wire thick	Galvanized: 0.66/0.9/1.0/1.4/1.6/1.8/2.0mm	PVC Coated : 0.66/0.7/0.8/1.0/1.8/2.0mm
Hole size	6.35*6.35mm, 9.5*9.5mm, 12*12mm, 19*19mm, 25*25mm, 25*50mm, 50*100mm, 100*100mm	
Length	15m/18m/20m/25m/30m/35m/40m/50m	
Width	0.9m, 1m, 1.2m, 1.5m, 1.8m, 2m, 2.2m, 2.4m	
Surface treatment	1. Electro galvanized Zinc coating 8-15g/m <sup>2</sup> 2. hot dip galvanized Zinc coating 40-60g/m <sup>2</sup> 3. PVC coating	



GF150-1



GF150-2



GF150-3



GF150



GF151

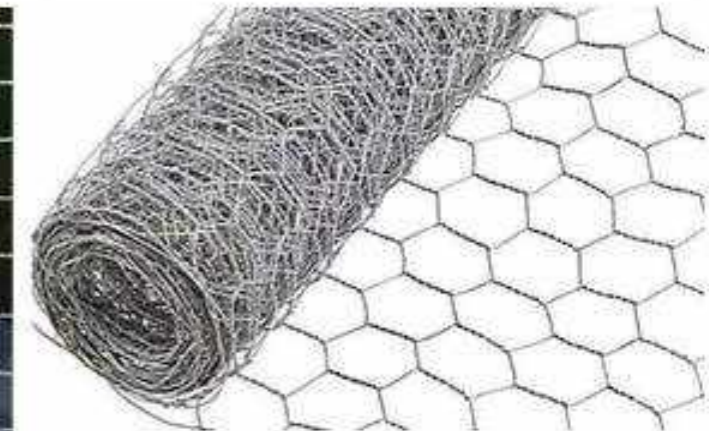


# Hexagonal Wire Mesh

Wire diameter	Mesh opening			width	Diameter	Mesh Opening		width
0.7mm	+1.0mm	3/8"	10mm	0.6-1m	0.6-1.0mm	1/2"	13mm	0.6-2m
	+1.5mm	1/2"	13mm	0.6-2m	0.6-1.0mm	3/4"	19mm	
	+2.0mm	5/8"	16mm		0.7-1.3mm	1"	25mm	0.3*2m
	+3.0mm	3/4"	20mm		0.85-1.3mm	1-1/4"	30mm	
0.9mm	+3.0mm	1"	25mm	0.3-2m	0.85-1.4mm	1-1/4"	40mm	
	+4.0mm	1-1/4"	31mm		1.0-1.4mm	2"	50mm	
1.0mm	+5.0mm	1-1/2"	40mm					
	+7.0mm	2-1/2"	65mm					
1.2mm	+6.0mm	2"	50mm					
1.4mm	+8.0mm	3"	75mm	0.6-2m				
1.6mm	+8.0mm	4"	100mm					
Galvanized type					PVC Coated type			



GF152



GF153-1



GF153-2





## Fittings



## Fittings





# RAL Color Chart

Due to the different printing effect, color will be different with the real color.



RAL 1000 Green Beige		RAL 2008 Bright Red Orange		RAL 4007 Purple Violet	
RAL 1001 Beige		RAL 2009 Traffic Orange		RAL 4008 Signal Violet	
RAL 1002 Sand Yellow		RAL 2010 Signal Orange		RAL 4009 Pastel Violet	
RAL 1003 Signal Yellow		RAL 2011 Deep Orange		RAL 4010 Tele Magenta	
RAL 1004 Golden Yellow		RAL 2012 Salmon Orange		RAL 5000 Violet Blue	
RAL 1005 Honey Yellow		RAL 3000 Flame Red		RAL 5001 Green Blue	
RAL 1006 Maize Yellow		RAL 3001 Signal Red		RAL 5002 Ultramarine	
RAL 1007 Daffodil Yellow		RAL 3002 Carmine Red		RAL 5003 Sapphire Blue	
RAL 1011 Brown Beige		RAL 3003 Ruby Red		RAL 5004 Black Blue	
RAL 1012 Lemon Yellow		RAL 3004 Purple Red		RAL 5005 Signal Blue	
RAL 1013 Oyster White		RAL 3005 Wine Red		RAL 5007 Brilliant Blue	
RAL 1014 Dark Ivory		RAL 3007 Black Red		RAL 5008 Grey Blue	
RAL 1015 Light Ivory		RAL 3009 Oxide Red		RAL 5009 Azure Blue	
RAL 1016 Sulfur Yellow		RAL 3011 Brown Red		RAL 5010 Gentian Blue	
RAL 1017 Saffron Yellow		RAL 3012 Beige Red		RAL 5011 Steel Blue	
RAL 1018 Zinc Yellow		RAL 3013 Tomato Red		RAL 5012 Light Blue	
RAL 1019 Grey Beige		RAL 3014 Antique Pink		RAL 5013 Cobalt Blue	
RAL 1020 Olive Yellow		RAL 3015 Light Pink		RAL 5014 Pigeon Blue	
RAL 1021 Rape Yellow		RAL 3016 Coral Red		RAL 5015 Sky Blue	
RAL 1023 Traffic Yellow		RAL 3017 Rose		RAL 5017 Traffic Blue	
RAL 1024 Ochre Yellow		RAL 3018 Strawberry Red		RAL 5018 Turquoise Blue	
RAL 1027 Curry		RAL 3020 Traffic Red		RAL 5019 Capri Blue	
RAL 1028 Melon Yellow		RAL 3022 Salmon Pink		RAL 5020 Ocean Blue	
RAL 1032 Broom Yellow		RAL 3027 Raspberry Red		RAL 5021 Water Blue	
RAL 1033 Dahlia Yellow		RAL 3031 Orient Red		RAL 5022 Night Blue	
RAL 1034 Pastel Yellow		RAL 4001 Red Lilac		RAL 5023 Distant Blue	
RAL 2000 Yellow Orange		RAL 4002 Red Violet		RAL 5024 Pastel Blue	
RAL 2001 Red Orange		RAL 4003 Heather Violet		RAL 6000 Patina Green	
RAL 2002 Vermilion		RAL 4004 Red Violet		RAL 6001 Emerald Green	
RAL 2003 Pastel Orange		RAL 4005 Blue Lilac		RAL 6002 Leaf Green	
RAL 2004 Pure Orange		RAL 4006 Traffic Purple		RAL 6003 Olive Green	



Due to the different printing effect, color will be different with the real color.

# RAL Color Chart

RAL 6004 Brown Green		RAL 7002 Olive Grey		RAL 7044 Silk Grey	
RAL 6005 Moss Green		RAL 7003 Moss Grey		RAL 8000 Green Brown	
RAL 6006 Grey Olive		RAL 7004 Signal Grey		RAL 8001 Ochre Brown	
RAL 6007 Bottle Green		RAL 7005 Mouse Grey		RAL 8002 Signal Brown	
RAL 6008 Brown Green		RAL 7006 Beige Grey		RAL 8003 Clay Brown	
RAL 6009 Fir Green		RAL 7008 Khaki Grey		RAL 8004 Coper Brown	
RAL 6010 Grass Green		RAL 7009 Green Grey		RAL 8007 Fawn Brown	
RAL 6011 Reseda Green		RAL 7010 Tarpaulin Grey		RAL 8008 Olive Brown	
RAL 6012 Black Green		RAL 7011 Iron Grey		RAL 8011 Nut Brown	
RAL 6013 Reed Green		RAL 7012 Basalt Grey		RAL 8012 Red Brown	
RAL 6014 Yellow Olive		RAL 7013 Brown Grey		RAL 8014 Sepia Brown	
RAL 6015 Black Olive		RAL 7015 Slate Grey		RAL 8015 Chestnut Brown	
RAL 6016 Turquoise Green		RAL 7016 Anthracite Grey		RAL 8016 Mahogany Brown	
RAL 6017 May Green		RAL 7021 Black Grey		RAL 8017 Chocolate Brown	
RAL 6018 Yellow Green		RAL 7022 Umber Grey		RAL 8019 Grey Brown	
RAL 6019 Pastel Green		RAL 7023 Concrete Grey		RAL 8022 Black Brown	
RAL 6020 Chrome Green		RAL 7024 Graphite Grey		RAL 8023 Orange Brown	
RAL 6021 Pale Green		RAL 7026 Granite Grey		RAL 8024 Beige Brown	
RAL 6022 Olive Drab		RAL 7030 Stone Grey		RAL 8025 Pale Brown	
RAL 6024 Traffic Green		RAL 7031 Blue Grey		RAL 8028 Terra Brown	
RAL 6025 Fern Green		RAL 7032 Pebble Grey		RAL 9001 Cream	
RAL 6026 Opal Green		RAL 7033 Cement Grey		RAL 9002 Grey White	
RAL 6027 Light Green		RAL 7034 Yellow Grey		RAL 9003 Signal White	
RAL 6028 Pine Green		RAL 7035 Light Grey		RAL 9004 Signal Black	
RAL 6029 Mint Green		RAL 7036 Platinum Grey		RAL 9005 Jet Black	
RAL 6032 Signal Green		RAL 7037 Dusty Grey		RAL 9010 Pure White	
RAL 6033 Mint Turquoise		RAL 7038 Agate Grey		RAL 9011 Graphiack	
RAL 6034 Pastel Turquoise		RAL 7039 Quartz Grey		RAL 9016 Traffic White	
RAL 6035 Pearl Green		RAL 7040 Window Grey		RAL 9017 Traffic Black	
RAL 7000 Squirrel Grey		RAL 7042 Traffic Grey A		RAL 9018 Papyrus White	
RAL 7001 Silver Grey		RAL 7043 Traffic Grey B			

Other Available Color Chart:  
 1. PANTONE (1690 kinds of colors);  
 2. FRD (360 kinds of colors).

# Common Gauge Size and Diameter Comparison List



Gauge No.	SWG (British System)		BWG (Birmingham)		BG		AWG (American System)	
	inch	mm	inch	mm	inch	mm	inch	mm
7/0	0.5	12.7			0.6666	16.932		
6/0	0.464	11.786			0.625	15.875	0.58	14.732
5/0	0.432	10.973	0.5	12.7	0.5883	14.943	0.5165	13.119
4/0	0.4	10.16	0.454	11.532	0.5416	13.757	0.46	11.684
3/0	0.372	9.449	0.425	10.795	0.5	12.7	0.4096	10.404
2/0	0.348	8.839	0.38	9.625	0.4452	11.308	0.3648	9.266
0	0.324	8.230	0.340	8.639	0.3954	10.069	0.3249	8.252
1	0.300	7.620	0.300	7.620	0.3532	8.971	0.2893	7.348
2	0.276	7.010	0.284	7.214	0.3147	7.993	0.2576	6.544
3	0.252	6.401	0.259	6.579	0.2804	7.122	0.2294	5.827
4	0.232	5.893	0.238	6.045	0.2500	6.350	0.2043	5.189
5	0.212	5.385	0.220	5.588	0.2225	5.652	0.1819	4.621
6	0.192	4.877	0.203	5.156	0.1981	5.032	0.1620	4.115
7	0.176	4.470	0.180	4.572	0.1764	4.481	0.1443	3.665
8	0.160	4.046	0.165	4.191	0.1570	3.988	0.1285	3.264
9	0.144	3.658	0.148	3.759	0.1398	3.551	0.1144	2.906
10	0.128	3.215	0.134	3.404	0.1250	3.175	0.1019	2.588
11	0.116	2.946	0.120	3.048	0.1113	2.827	0.0907	2.305
12	0.104	2.642	0.109	2.769	0.0991	2.517	0.0808	2.053
13	0.092	2.337	0.095	2.413	0.0882	2.240	0.0720	1.828
14	0.080	2.032	0.083	2.108	0.0785	1.994	0.0641	1.628
15	0.072	1.829	0.072	1.829	0.0699	1.775	0.0571	1.450
16	0.064	1.626	0.065	1.651	0.0625	1.588	0.0508	1.291
17	0.056	1.422	0.058	1.473	0.0556	1.412	0.0453	1.150
18	0.048	1.219	0.049	1.245	0.0495	1.257	0.0403	1.024
19	0.040	1.016	0.042	1.067	0.0440	1.118	0.0359	0.912
20	0.036	0.914	0.035	0.889	0.0392	0.996	0.0320	0.812
21	0.032	0.813	0.032	0.813	0.0349	0.887	0.0285	0.723
22	0.0280	0.711	0.028	0.711	0.03125	0.749	0.02535	0.644
23	0.0240	0.610	0.025	0.635	0.02782	0.707	0.02256	0.573
24	0.0220	0.559	0.022	0.559	0.02476	0.629	0.02011	0.511
25	0.0200	0.508	0.020	0.508	0.02204	0.560	0.01791	0.455
26	0.0180	0.457	0.018	0.457	0.01961	0.498	0.01594	0.405
27	0.0164	0.417	0.016	0.406	0.01745	0.443	0.01420	0.361
28	0.0148	0.376	0.014	0.356	0.01562	0.397	0.01264	0.321
29	0.0136	0.345	0.013	0.330	0.01390	0.353	0.01126	0.286
30	0.0124	0.315	0.012	0.305	0.01230	0.312	0.01003	0.255
31	0.0116	0.295	0.010	0.254	0.01100	0.27	0.00893	0.227
32	0.0108	0.274	0.009	0.229	0.00980	0.249	0.00795	0.202
33	0.0100	0.254	0.008	0.203	0.00870	0.221	0.00708	0.180
34	0.0092	0.234	0.007	0.178	0.00770	0.196	0.00630	0.160
35	0.0084	0.213	0.005	0.127	0.00690	0.175	0.00561	0.143
36	0.0076	0.193	0.004	0.102	0.00610	0.155	0.00500	0.127
37	0.0068	0.173			0.00540	0.137	0.00445	0.113
38	0.0060	0.152			0.00480	0.122	0.00396	0.101
39	0.0052	0.132			0.00430	0.109	0.00353	0.090
40	0.0048	0.122			0.00386	0.098	0.00314	0.080
41	0.0044	0.112			0.00343	0.087	0.00280	0.071
42	0.0040	0.102			0.00306	0.078	0.00249	0.063
43	0.0036	0.091			0.00272	0.069	0.00222	0.056
44	0.0032	0.081			0.00242	0.061	0.00198	0.050
45	0.0028	0.071			0.00215	0.055	0.00176	0.048
46	0.0024	0.061			0.00192	0.049	0.00157	0.040
47	0.0020	0.051			0.00170	0.043	0.00140	0.035
48	0.0016	0.041			0.00152	0.039	0.00124	0.032
49	0.0012	0.030			0.00135	0.034	0.00111	0.028
50	0.0010	0.025			0.00120	0.030	0.00099	0.025



# Tube Specifications Imperial & Metric Comparison Table

O.D.	Schedule	Wall	I.D.	O.D.	Schedule	Wall	I.D.	O.D.	Schedule	Wall	I.D.
1/8" 10.3mm	10S	1.24	7.80	1-1/2" 48.3mm	5S	1.65	44.96	5"	160	15.88	109.6
	40ST, 40S	1.73	6.83		10S	2.77	42.76		XX	19.05	103.2
	80SX, 80S	2.41	5.46		40ST, 40S	3.68	40.89		5S	2.77	135.8
1/4" 13.7mm	10S	1.65	10.41	2"	10S	2.77	54.79	6"	10S	3.40	134.5
	40ST, 40S	2.24	9.25		40ST, 40S	3.91	52.50		40ST, 40S	6.55	128.2
	80SX, 80S	3.02	7.67		80SX, 80S	3.20	10.74		80ST, 80S	9.53	122.3
3/8" 17.1mm	10S	1.65	13.84	2-1/2" 73mm	5S	1.65	57.02	8"	120	12.70	115.9
	40ST, 40S	2.31	12.52		10S	2.77	54.79		160	15.88	109.6
	80SX, 80S	3.20	10.74		80SX, 80S	5.54	49.25		XX	19.05	103.2
1/2" 21.3mm	5S	1.65	18.03	3"	5S	2.11	68.81	168.3mm	5S	2.77	162.7
	10S	2.11	17.12		10S	3.05	66.93		10S	3.40	161.5
	40ST, 40S	2.87	15.80		40ST, 40S	5.16	62.71		40ST, 40S	7.11	154.1
3/4" 26.7mm	80SX, 80S	3.91	13.87	3-1/2" 101.6mm	160	5.56	11.79	219.1mm	80ST, 80S	10.97	146.3
	160	5.56	15.54		5S	2.11	84.68		120	14.27	139.7
	XX	7.82	6.40		10S	3.05	82.80		160	18.26	136.7
1" 33.4mm	40ST, 40S	2.87	22.45	4"	40ST, 40S	5.49	77.93	8"	XX	21.95	124.4
	80SX, 80S	3.91	18.85		5S	2.11	84.68		5S	2.77	213.5
	160	5.56	15.54		10S	3.05	82.80		10S	3.76	211.6
1-1/4" 42.2mm	XX	9.09	15.21	4"	160	9.53	53.98	8"	20	6.35	206.4
	5S	1.65	30.10		40ST, 40S	7.62	73.66		30	7.04	205.0
	10S	2.77	27.86		80SX, 80S	7.62	73.66		40ST, 40S	8.18	202.7
1-1/4" 42.2mm	40ST, 40S	3.38	26.64	4"	160	11.13	66.65	8"	60	10.31	198.5
	80ST, 80S	4.55	24.31		XX	15.24	58.42		80ST, 80S	12.70	193.7
	160	6.35	20.70		5S	2.11	97.38		100	15.09	188.9
1-1/4" 42.2mm	XX	9.09	15.21	4"	10S	3.05	95.50	8"	120	18.26	182.5
	5S	1.65	38.86		40ST, 40S	5.74	90.12		110	20.62	177.8
	10S	2.77	36.63		80SX, 80S	8.08	85.45		XX	22.23	174.6
1-1/4" 42.2mm	40ST, 40S	3.56	35.05	4"	160	11.13	66.65	8"	160	23.01	173.1
	80ST, 80S	4.85	32.46		5S	2.11	110.1				
	160	6.35	29.46		10S	3.05	108.2				
1-1/4" 42.2mm	XX	9.70	22.76	4"	40ST, 40S	6.02	102.3	8"			
	5S	1.65	38.86		80ST, 80S	8.56	97.20				
	10S	2.77	36.63		120	12.7	115.9				

## Conversion Tables

长度 Length	1千米(km) = 0.612英里(mile)	1米(m) = 3.281英尺(ft) = 1.094码(yd)	1厘米(cm) = 0.394英寸(in)
	1英里(mile) = 1.609千米(km)	1英尺(ft) = 0.3048米(m)	1英寸(in) = 2.54厘米(cm)
	1海里(n mile) = 1.852千米(km)	1码(yd) = 0.9144米(m)	1英尺(ft) = 12英寸(in)
	1码(yd) = 3英尺(ft)	1英里(mile) = 5280英尺(ft)	1海里(n mile) = 1.1516英里(mile)
质量 Quality	1吨(t)1000千克(kg) = 2205磅(1b) = 1.102短吨(sh.ton) = 0.934长吨(long.ton)	1千克(kg) = 2.205磅(1b)	1短吨(sh.ton) = 0.907吨(t) = 2000磅(1b)
	1长吨(long.ton) = 1.016吨(t)	1磅(1b) = 0.454千克(kg)	1盎司(oz) = 28.350克(g)
压力 Pessure	1兆帕(Mpa) = 145磅/英寸 <sup>2</sup> (psi) = 10.2千克/厘米 <sup>2</sup> (kg/cm <sup>2</sup> ) = 10巴(bar) = 9.8大气压(at m)	1磅/英寸 <sup>2</sup> (psi) = 0.006895兆帕(Mpa) = 0.0703千克/厘米 <sup>2</sup> (kg/cm <sup>2</sup> ) = 0.0689巴(bar) = 0.068大气压(at m)	1巴(bar) = 0.1兆帕(Mpa) = 14.503磅/英寸 <sup>2</sup> (psi) = 1.0197千克/厘米 <sup>2</sup> (kg/cm <sup>2</sup> ) = 0.987大气压(at m)
	1大气压(at m) = 0.101325兆帕(Mpa) = 14.696磅/英寸 <sup>2</sup> (psi) = 1.0333千克/厘米 <sup>2</sup> (kg/cm <sup>2</sup> ) = 1.0133巴(bar)		
面积 Area	1平方公里(km <sup>2</sup> ) = 100公顷(ha) = 247.1英亩(acre) = 0.386平方英里(mile <sup>2</sup> )	1平方米(m <sup>2</sup> ) = 10.764平方英尺(ft <sup>2</sup> )	1公亩(acre) = 100平方米(m <sup>2</sup> )
	1公顷(ha) = 10000平方米(m <sup>2</sup> ) = 2.471英亩(acre)	1平方英里(mile <sup>2</sup> ) = 2.590平方公里(km <sup>2</sup> )	1英亩(acre) 0.4047公顷(ha) = 40.47 × 10 <sup>-3</sup> 平方公里(km <sup>2</sup> ) = 4047平方米(m <sup>2</sup> )
	1平方英尺(ft <sup>2</sup> ) = 0.093平方米(m <sup>2</sup> )	1平方英寸(in <sup>2</sup> ) = 6.452平方厘米(cm <sup>2</sup> )	1平方码(yd <sup>2</sup> ) = 0.8361平方米(m <sup>2</sup> )
体积 volume	1立方米(m <sup>3</sup> ) = 1000升(liter) = 35.315立方英尺(ft <sup>3</sup> ) = 6.290桶(bbl)	1立方英尺(ft <sup>3</sup> ) = 0.0283立方米(m <sup>3</sup> ) = 28.317升(l)	1000立方英尺(mcf) = 28.317立方米(m <sup>3</sup> )
	1百万立方英尺(MMcf) = 2.8317万立方米(m <sup>3</sup> )	10亿立方英尺(bcf) = 2831.7万立方米(m <sup>3</sup> )	1万亿立方英尺(tcf) = 283.17亿立方米(m <sup>3</sup> )
	1立方英寸(in <sup>3</sup> ) = 16.3871立方厘米(cm <sup>3</sup> )	1英亩·英尺 = 1234万立方米(m <sup>3</sup> )	1桶(bbl) = 0.159立方米(m <sup>3</sup> ) = 42美加仑
	1美加仑(gal) = 3.785升(l)	1美夸脱(qt) = 0.946升(l)	1美品脱(pt) = 0.473升(l)
	1美吉尔(gi) = 0.118升(l)	1美加仑(gal) = 4.546升(l)	
力 Force	1牛顿(N) = 0.225磅力(lbf) = 0.102千克力(kgf)	1千克力(kgf) = 9.81牛顿(N)	1磅力(lbf) = 4.45牛顿(N)
	1达因(dyn)10 <sup>-5</sup> 牛顿(N)		
速度 Speed	1英尺/秒(ft/s) = 0.3048米/秒(m/s)	1英里/秒(mile/h) = 0.44704米/秒(m/s)	